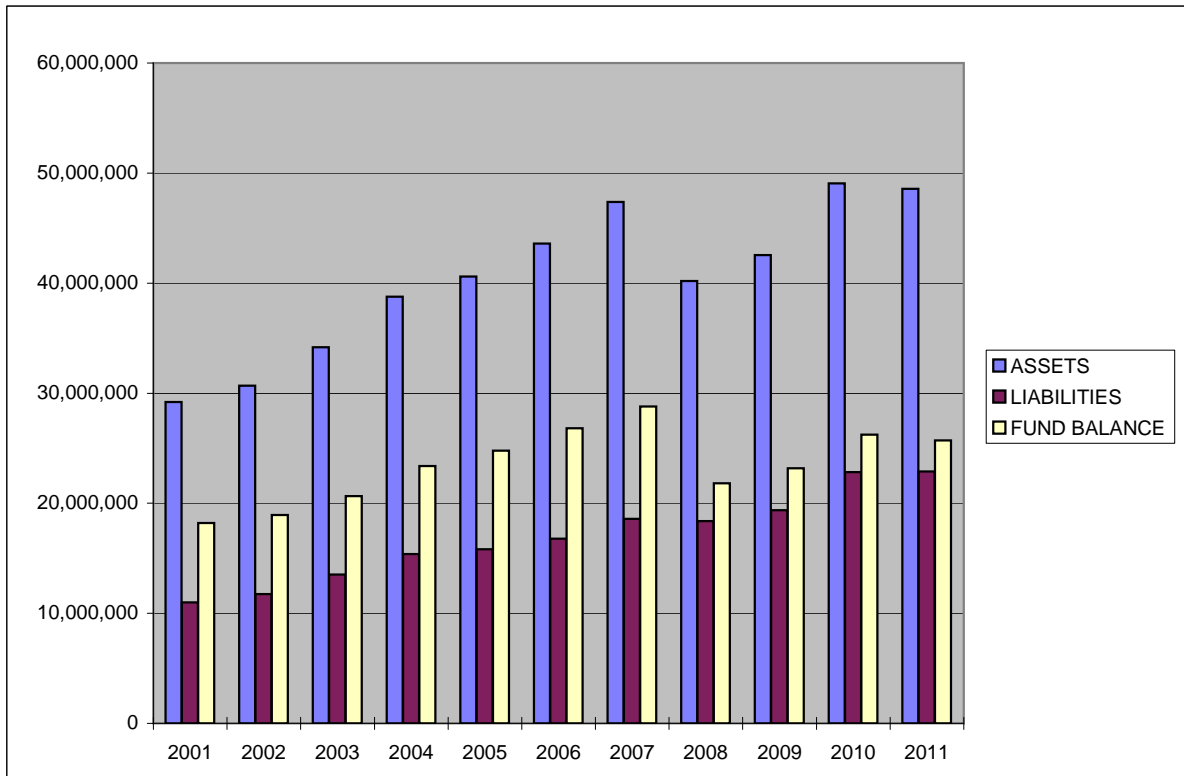


**AMERICAN VETERINARY MEDICAL ASSOCIATION
TREASURER'S INTERIM REPORT
JUNE, 2011**

- a. Assets, Liabilities, & Fund Balance**
- b. Income over Expenses**
- c. Dues Income**
- d. 2011 Income Budget**
- e. 2011 Expense Budget**
- f. Reserves History**

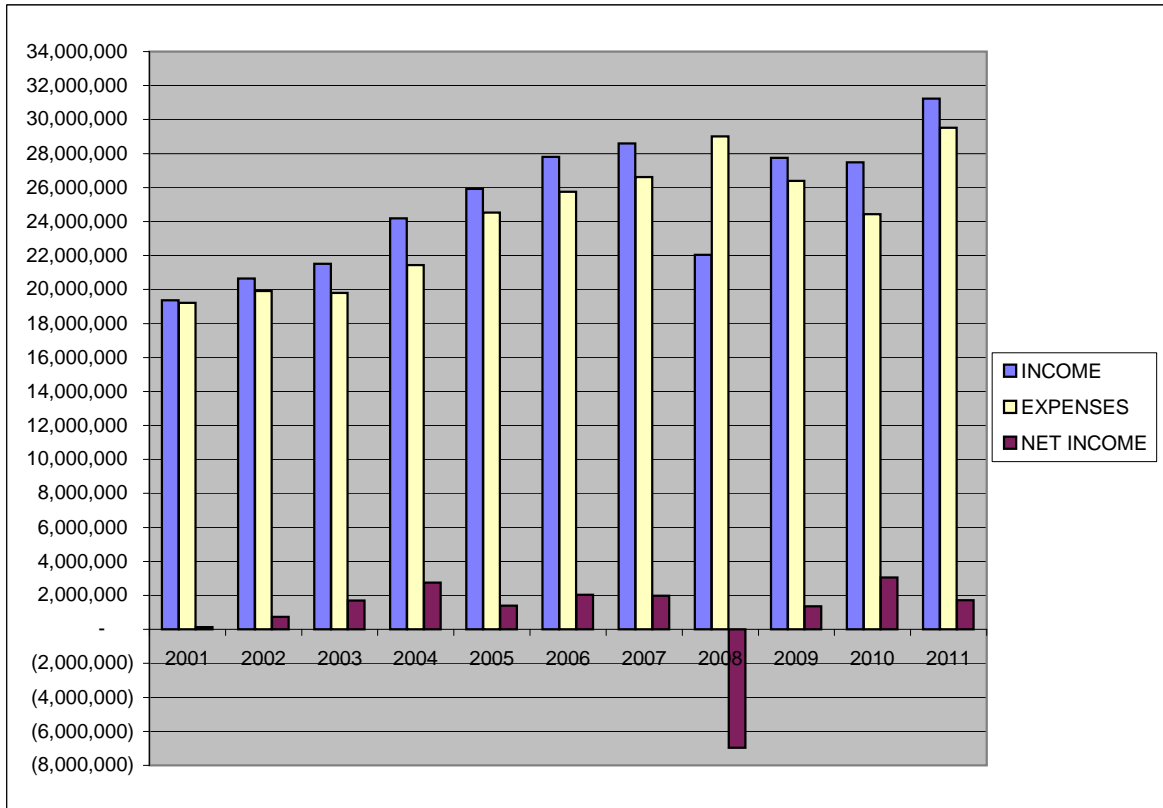
**AMERICAN VETERINARY MEDICAL ASSOCIATION
ASSETS, LIABILITIES & FUND BALANCE
2001 - 2011**



	<u>ASSETS</u>	<u>LIABILITIES</u>	<u>FUND BALANCE</u>
2001	29,195,813	10,999,137	18,196,676
2002	30,689,117	11,759,011	18,930,106
2003	34,168,660	13,533,656	20,635,004
2004	38,755,352	15,370,963	23,384,389
2005	40,590,794	15,813,224	24,777,570
2006	43,595,115	16,779,381	26,815,734
2007	47,379,046	18,589,195	28,789,851
2008	40,201,503	18,384,874	21,816,629
2009	42,541,888	19,357,967	23,183,921
2010	49,066,397	22,823,508	26,242,889
*2011	48,575,777	22,877,500	25,698,277

*Projection as of May 2011

**AMERICAN VETERINARY MEDICAL ASSOCIATION
INCOME OVER EXPENSES
2001 - 2011**

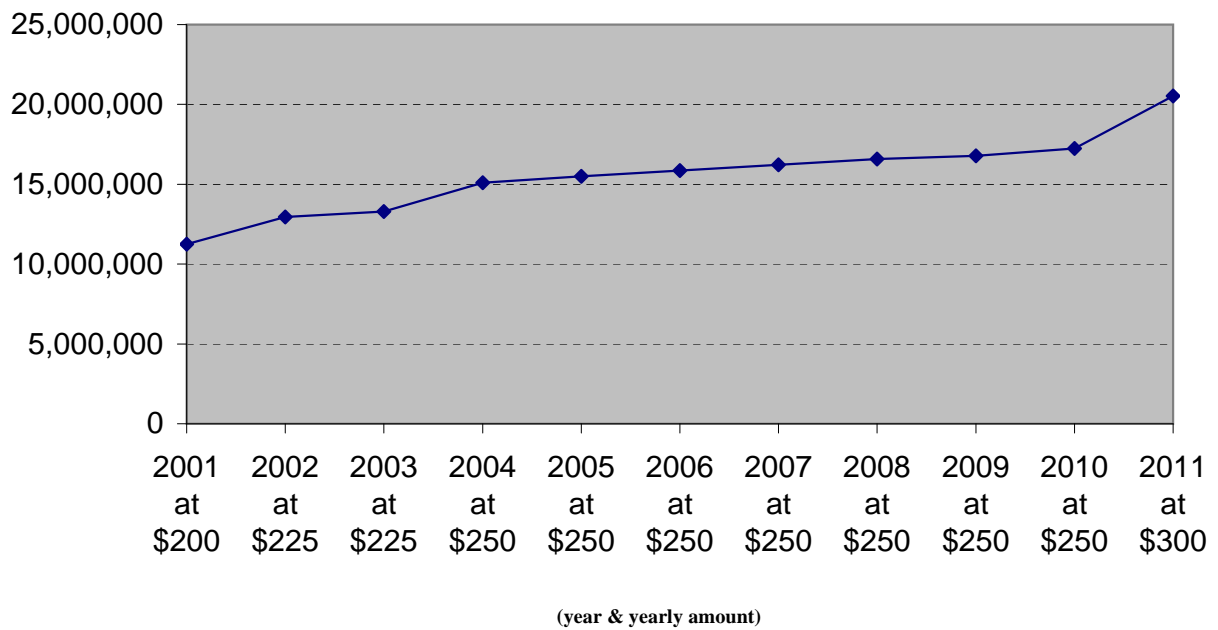


	<u>**INCOME</u>	<u>EXPENSES</u>	<u>NET INCOME</u>
2001	19,359,697	19,219,058	140,639
2002	20,639,628	19,906,198	733,430
2003	21,511,719	19,806,821	1,704,898
2004	24,188,932	21,439,548	2,749,385
2005	25,926,226	24,533,046	1,393,180
2006	27,794,949	25,756,785	2,038,164
2007	28,600,016	26,625,899	1,974,117
2008	22,044,557	29,017,779	(6,973,222)
2009	27,753,513	26,386,222	1,367,291
2010	27,490,556	24,431,588	3,058,968
*2011	31,232,040	29,514,817	1,717,223

*Projection

**In 2012, Investment Income will be removed from the budget process

**AMERICAN VETERINARY MEDICAL ASSOCIATION
DUES INCOME
2001 - 2011**



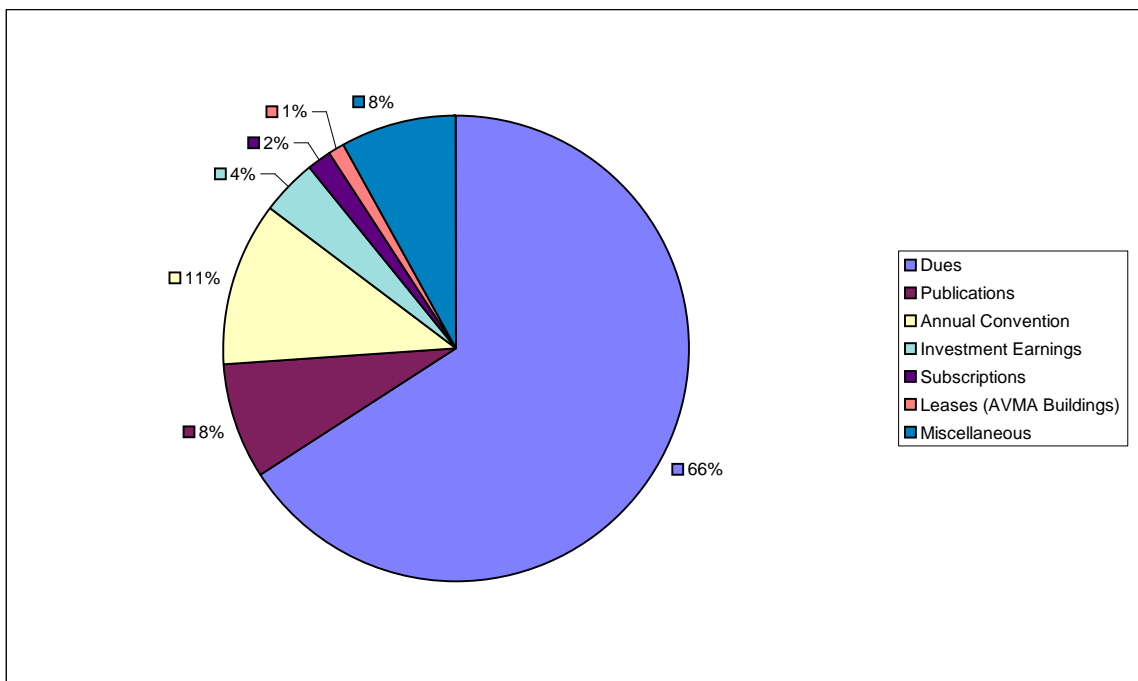
<u>YEAR</u>	<u>DUES</u>	<u>TOTAL</u>
2001	200	11,254,522
2002	225	12,948,433
2003	225	13,298,925
2004	250	15,100,463
2005	250	15,506,032
2006	250	15,856,498
2007	250	16,210,411
2008	250	16,584,983
2009	250	16,785,764
2010	250	17,236,586
*2011	300	20,530,000

* Projection

**AMERICAN VETERINARY MEDICAL ASSOCIATION
2011 INCOME BUDGET**

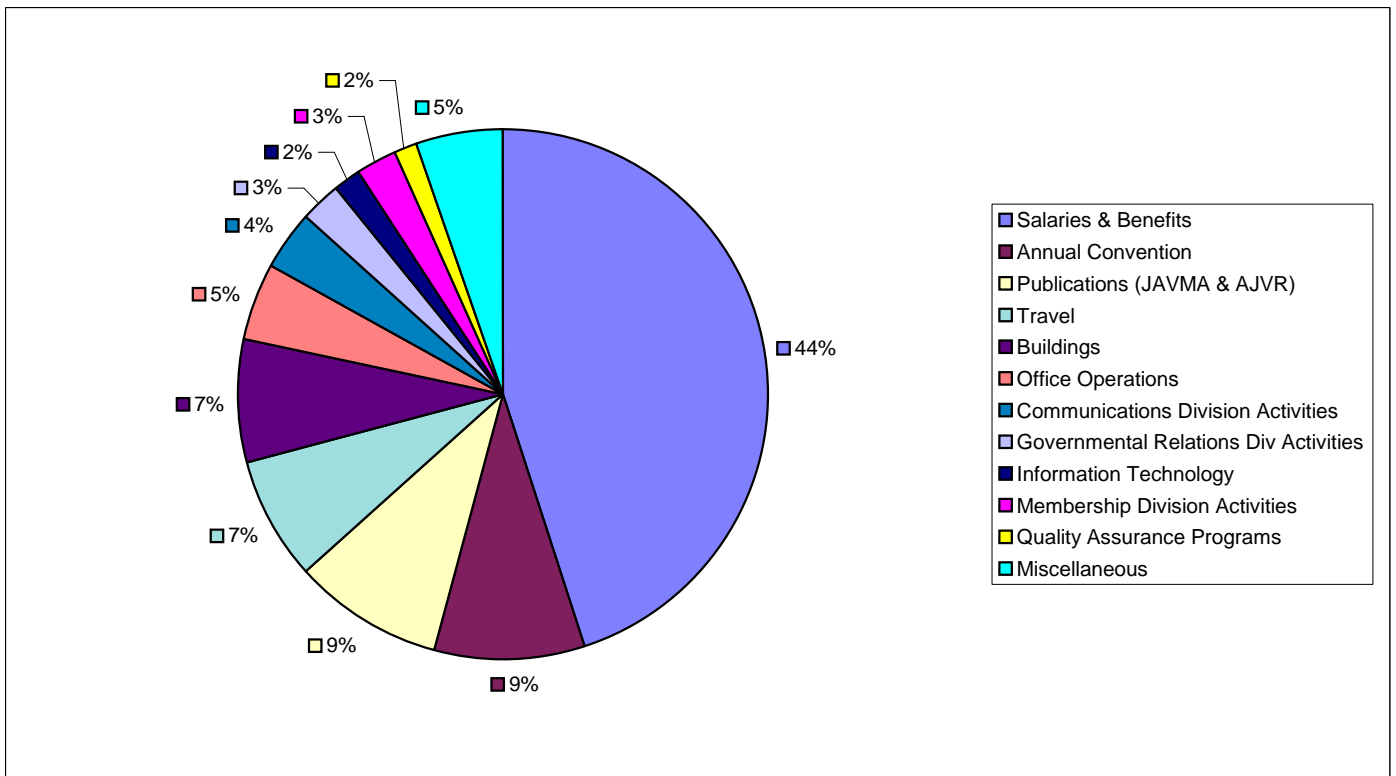
<u>INCOME</u>	<u>AMOUNT</u>	<u>%</u>
Dues	\$20,530,000	66%
Publications	2,509,150	8%
Annual Convention	3,574,690	11%
*Investment Earnings	1,250,000	4%
Subscriptions	540,000	2%
Leases (AVMA Buildings)	305,000	1%
Miscellaneous:		
Quality Assurance Programs	500,000	
Career Center	260,000	
Disaster Relief Program	150,000	
Royalties	250,000	
Non Convention Sponsorship	200,000	
Accreditation, Ap, Admin Fees	196,500	
Communications	139,200	
ECFVG	200,000	
Mailing Lists and Labels	115,000	
Other Income	512,500	
Total Miscellaneous	<u>2,523,200</u>	8%
Total Income	\$31,232,040	100%

*In 2012, Investment Income will be removed from the budget process.



**AMERICAN VETERINARY MEDICAL ASSOCIATION
2011 EXPENSE BUDGET**

<u>EXPENSES</u>	<u>AMOUNT</u>	<u>%</u>
Salaries & Benefits	\$13,247,380	44%
Annual Convention	2,758,540	9%
Publications (JAVMA & AJVR)	2,715,500	9%
Travel	2,205,530	7%
Buildings	2,170,000	7%
Office Operations	1,393,000	5%
Communications Division Activities	1,063,131	4%
Governmental Relations Div Activities	748,236	3%
Information Technology	478,900	2%
Membership Division Activities	765,000	3%
Quality Assurance Programs	450,000	2%
Miscellaneous	1,519,600	5%
Total Expenses	\$29,514,817	100%



**AMERICAN VETERINARY MEDICAL ASSOCIATION
RESERVES HISTORY**

PERCENTAGE OF OPERATING RESERVES:

YEAR	OPERATING EXPENSES	FUND BALANCE/ RESERVES	TOTAL RESTRICTED RESERVES	LONG TERM RESERVES	OPERATING RESERVES	% OPERATING RESERVES TO ACTUAL
2004	21,280,571	23,543,366	544,736	0	22,998,630	108%
2005	24,533,046	24,777,569	505,993	8,753,321	15,518,255	63%
2006	25,756,784	26,815,734	704,312	9,930,947	16,180,475	63%
2007	26,625,899	28,789,851	877,104	12,889,439	15,023,309	56%
2008	29,017,779	21,816,629	2,043,175	9,304,550	10,468,904	36%
2009	26,386,222	23,183,921	1,922,726	11,651,581	9,609,614	36%
2010	24,431,588	26,242,889	2,856,905	13,359,152	10,026,832	41%

PERCENTAGE OF LONG TERM RESERVES:

YEAR	TOTAL BUDGET	FUND BALANCE/ RESERVES	% RESERVES TO BUDGET	LONG TERM RESERVES	% OF LONG TERM RESERVES TO BUDGET
2004	21,515,200	23,543,366	109%	0	0%
2005	24,072,950	24,777,569	103%	8,753,321	36%
2006	25,602,790	26,815,734	105%	9,930,947	39%
2007	27,497,200	28,789,851	105%	12,889,439	47%
2008	28,681,810	21,816,629	76%	9,304,550	32%
2009	29,611,772	23,183,921	78%	11,651,581	39%
2010	27,689,149	26,242,889	95%	13,359,152	48%

