

AVMA 2025 Disaster Situational Awareness Report #2 Thursday, January 16, 2025

Southern California Fires

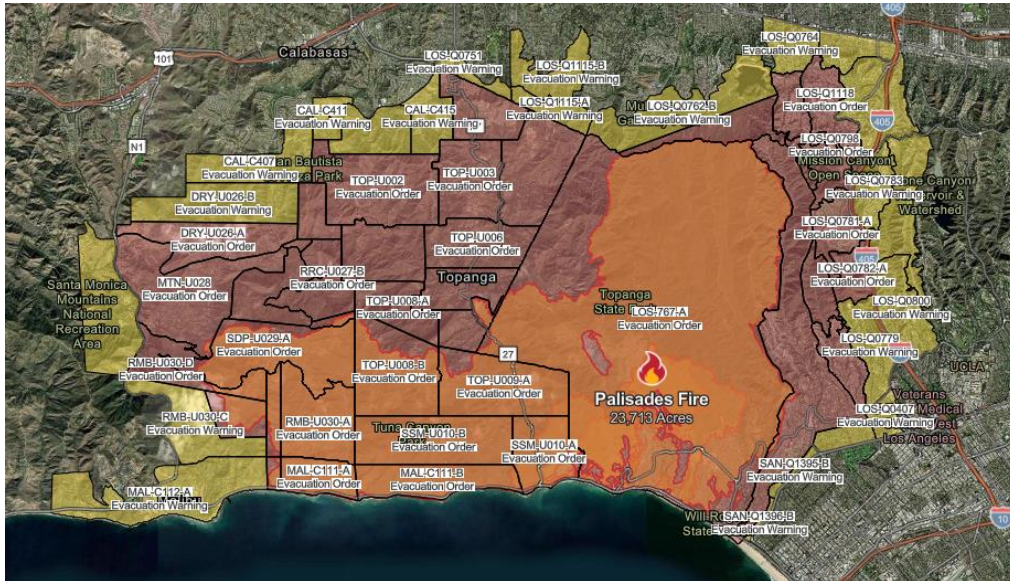
Red text indicates change from previous report



Fire	Date Started	Time Started	Acres Burne	% Contained	Structures	Fatalities/Injuries
Palisades	1/7/2025	10:30 AM	23,713	22%	>5,000 3,377 confirmed	8/3
Eaton	1/7/2025	6:18 PM	14,117	55%	>7,000 5,969 confirmed	16/6
Hurst	1/7/2025	10:29 PM	799	98%		
Auto	1/13/2025	9:25 PM	61	85%		

- Some news outlets are reporting up to 27 fatalities (unofficial)
- News outlets report at least 36 people are missing (unofficial)
- 54,104 customers without power
- 6 human shelters with 680 occupants (>4900 shelter stays to date)
- 18 human healthcare facilities have been evacuated
- 6 human healthcare clinics are non-functioning (at least a short term closure)
- The causes of all fires are still under investigation
- President Biden has authorized 100% Federal Cost Share for the next 180 days (normal is 75%)
- At least one veterinary clinic in Palisades (Pallisades Animal Clinic) has been reported a total loss
- The homes of at least 2 veterinarians have been lost to the fire, one of which served as a base for a mobile equine practice
- The AVMA Trust has been messaging AVMA insured members in the impacted areas

## Palisades Fire



### Animal Evacuation Shelters

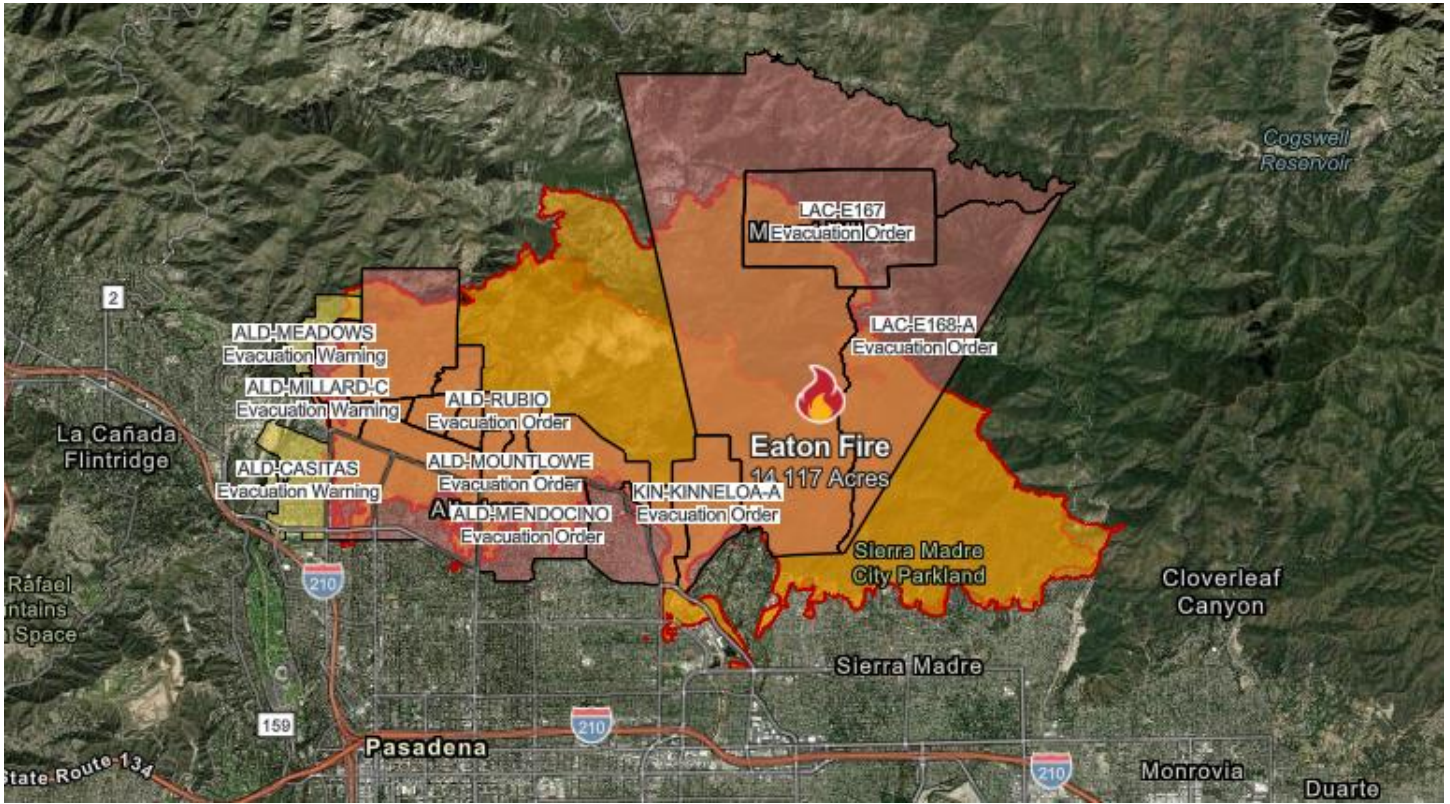
#### Small Animals:

- El Camino High School, 5440 Valley Circle Blvd, Woodland Hills
- American Red Cross Sheltering Site with mobile animal shelter (small animals only)
- Agoura Animal Care Center, 29525 Agoura Rd, Agoura Hills
- Baldwin Park Animal Care Center, 4275 Elton St, Baldwin Park
- Carson Animal Care Center, 216 W Victoria St, Gardena
- Castaic Animal Care Center, 31044 Charlie Canyon, Castaic
- Downey Animal Care Center, 11258 Garfield Ave, Downey
- Lancaster Animal Care Center, 5210 W Ave I, Lancaster
- Palmdale Animal Care Center, 38550 Sierra Hwy, Palmdale

#### Large Animals:

- Pomona Fairplex, 1101 W McKinley Ave, Pomona
- Industry Hills Expo, 16200 Temple Ave, City of Industry
- LA Equestrian, 480 Riverside Dr, Burbank (at capacity)
- Castaic Animal Care Center, 31044 Charlie Canyon, Castaic
- Hansen Dam Horse Park, 11127 Orcas Ave, Hansen Dam
- Pico Rivera Sports Arena, 11003 Sports Arena Dr, Pico Rivera

## Eaton Fire



### Animal Evacuation Shelters

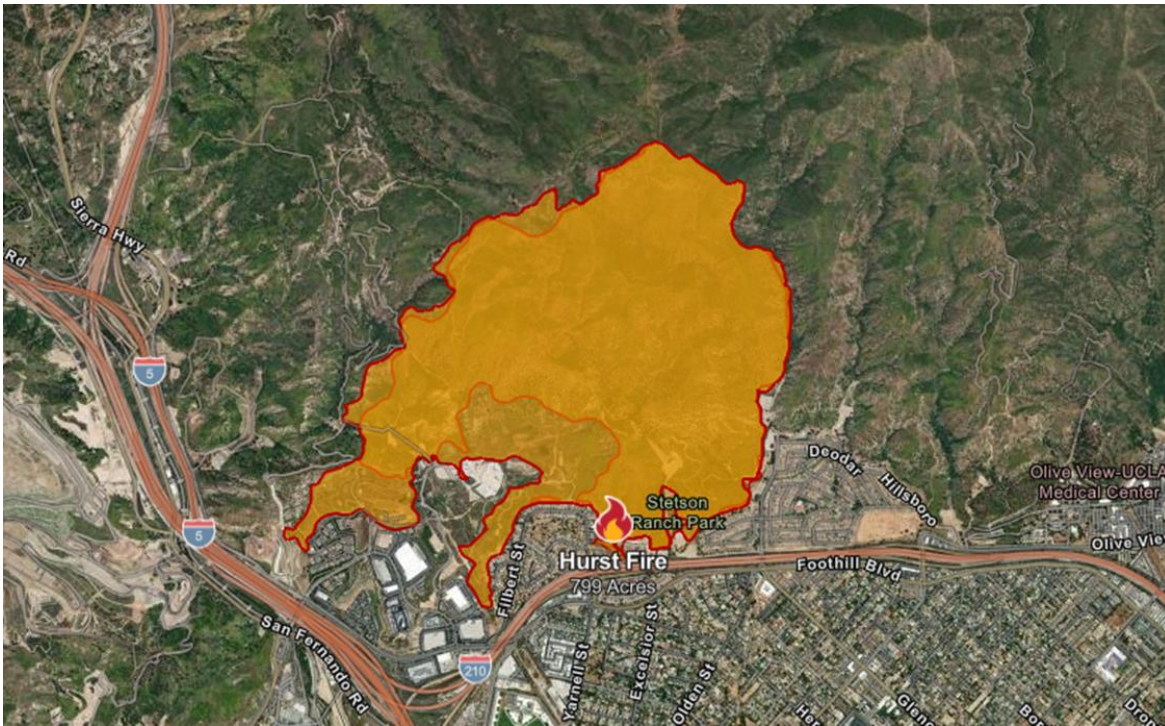
#### Small Animal Evacuation

- Pasadena Humane  
361 S. Raymond Ave, Pasadena, CA 91103
- Pomona Fairplex (Gate 3)  
1101 W McKinley Ave, Pomona, CA 91768

#### Large Animal Evacuation

- Industry Hills Expo Center  
16200 Temple, City of Industry
- Pomona Fairplex (Gate 3)  
1101 W McKinley Ave, Pomona, CA 91768

## HURST Fire



### Animal Evacuation Shelters

#### Small Animal Shelters

- Baldwin Park Animal Care Center, 4275 Elton St., Baldwin Park
- Carson Animal Care Center, 216 W Victoria St., Gardena, CA
- Downey Animal Care Center, 11258 Garfield Ave., Downey
- El Camino High School, 5440 Valley Circle Blvd., Woodland Hills, CA 91367, USA
- Lancaster Animal Care Center, 5210 W Ave I, Lancaster
- Palmdale Animal Care Center, 38550 Sierra Hwy, Palmdale

#### Large Animal Shelters

- Castaic Animal Care Center 31044 Charlie Canyon, Castaic
- Pomona Fairplex, 1101 W McKinley Ave., Pomona
- Industry Hills Expo, 16200 Temple Ave., City of Industry
- Los Angeles Equestrian Center, 480 W Riverside Dr., Burbank

### Animal Related Response Activities

- 10 animal strike teams have checked on 122 requests to have animals checked on
- 6 Red Cross shelters have about 70 animals staying with clients
- Total number of animals being sheltered are not well reported. Some reports indicate over 1000 animals are being sheltered due to the fires.
- ASPCA, American Humane, and Best Friends all have teams on the ground
- While a handful of out-of-state animal response personnel have been called in, most of these positions so far have been in a consulting role. Most animal response personnel have been in-state resources
- The UC Davis CVET team and the California Veterinary Medical Response Team are both standing by in case they are activated
- AVMA/AVMF has been in touch with CVMA, South California VMA

AVMA provides disaster preparedness, response, and recovery information at <https://www.avma.org/resources-tools/animal-health-and-welfare/disaster-preparedness> including information on grants available from AVMF for veterinarians who are either directly impacted by a disaster or who provide care to animals impacted by disasters.

Please contact Dr. Warren J. Hess at [whess@avma.org](mailto:whess@avma.org) with corrections or updates.