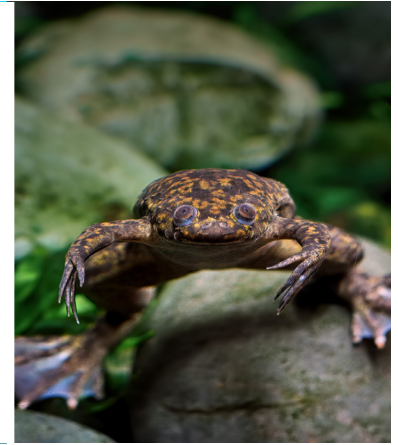
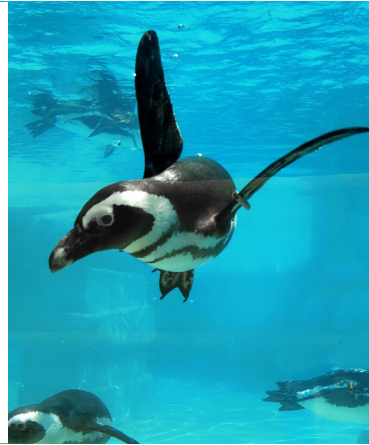


FALL ANIMAL WELFARE ASSESSMENT CONTEST®

November 22-24, 2024

University of Wisconsin — River Falls | River Falls, Wisconsin



WHAT IS IT?

The Animal Welfare Assessment Contest® (AWJAC®) is an educational tool designed to enhance understanding and awareness of welfare issues affecting animals used for human purposes (e.g., agriculture, research, companionship). The contest teaches ethical reasoning, encourages objective assessment of animal welfare on the basis of scientific theory and data, promotes critical thinking, and improves communication skills.

Participants interested in animal welfare are afforded a structured opportunity to practice their assessment skills and present their findings to an expert panel of scientists and veterinarians in a logical and persuasive manner.

WHO MAY PARTICIPATE?

Four divisions of the contest are offered: undergraduate junior, undergraduate senior, veterinary, and graduate students. Veterinary technician students are encouraged to compete in the undergraduate division. Additionally, a select number of veterinary technicians and AVMA member veterinarians may take part as non-placing participants.

WHAT GOES ON?

Participants analyze the welfare of various types of animals as presented in comparative scenarios, determine whether the welfare of animals in one scenario is better or worse than in the other, and present their decision orally to the judges. A live/on-site scenario is also assessed. Species for this year's contest include laboratory frogs, penguins in a zoo, commercial dog breeding, and a live scenario with dairy cows.

HOW DO I PREPARE?

Check out the new and improved awjac.org for our coaching tips, FAQs, practice scenarios, rules, and more.

TRAVELING TROPHIES

Awarded to the highest-placing team in each division, the trophies feature original artwork by Lynne Millman, Blandford, NS Canada.

TENTATIVE SCHEDULE

Friday, Nov. 22

DAY

- Interactive tours

EVENING

- Registration materials pick-up
- judges' introductions
- Keynote presentation

Saturday, Nov. 23

DAY

- Live scenario assessment
- Oral presentations

EVENING

- Networking event

Sunday, Nov. 24

DAY

- Individual scenario assessments
- Oral presentations

EVENING

- Awards reception

Presenting Partner:



Premier Partner:



Educational Partners:



Department of Animal Science
MICHIGAN STATE UNIVERSITY



Community Partners:



For more information contact Dr. Sharon Kuca at AWJAC@avma.org