



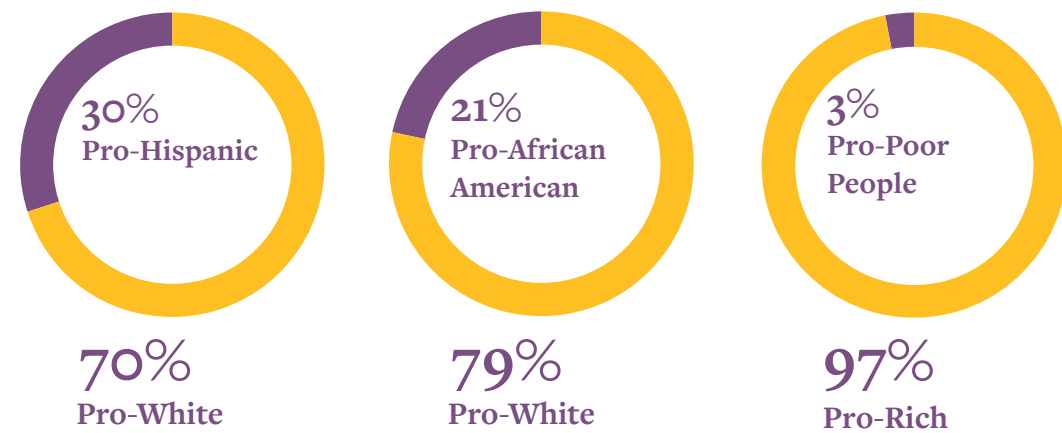
/ HARVARD PROJECT IMPLICIT RESULTS

“Minorities in general and Afro-Americans in particular are still virtually invisible in all aspects of organized animal protection.”
 ~ Society and Animals 13(2):153-162

IMPLICIT ASSOCIATION TEST RESULTS

Implicit Biases...

1. Are associations, attitudes, or stereotypes that operate relatively automatically.
2. Arise from shared cultural knowledge, personal experience, and explicit biases.
3. Can be observed by looking at how people behave or measured with tools such as the Implicit Association Test (IAT).

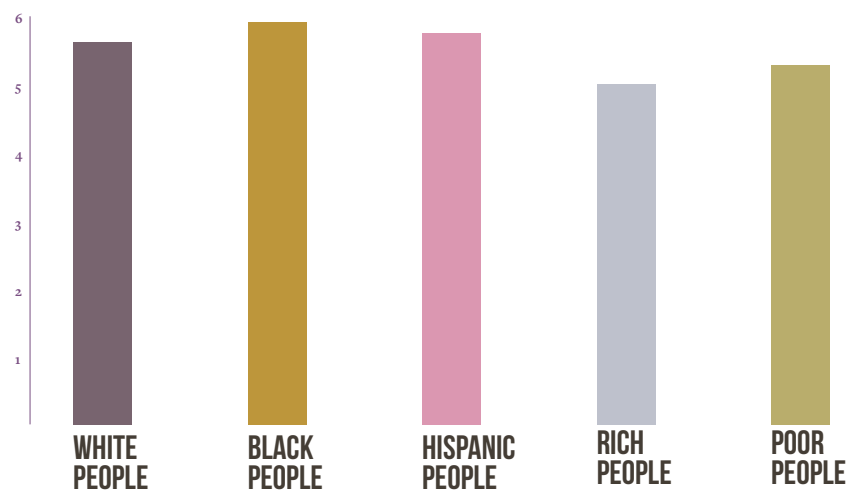


EXPLICIT TEST RESULTS

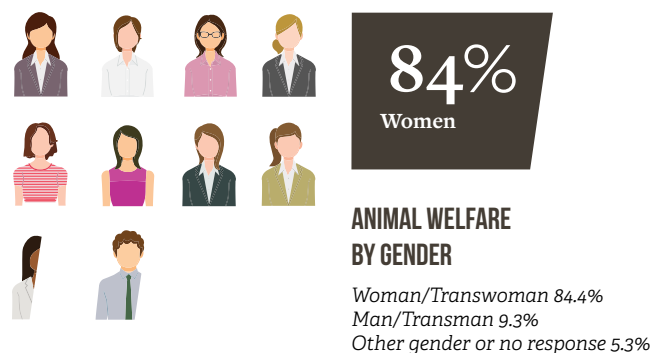
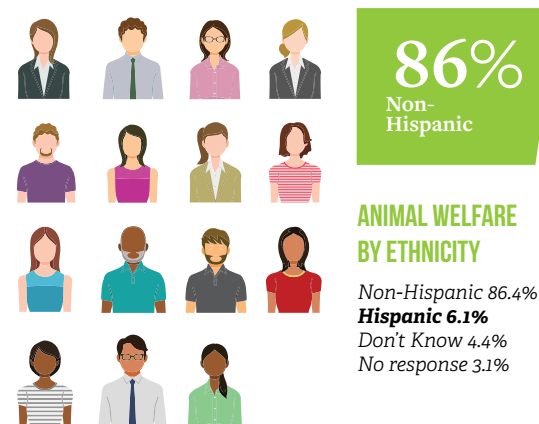
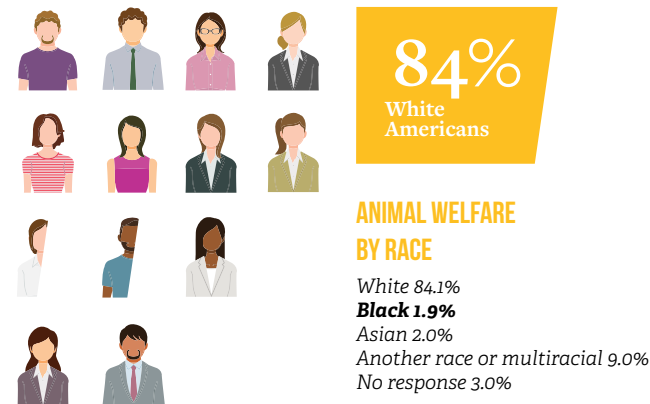
DESCRIPTIVE STATISTICS: ATTITUDES TOWARD SOCIAL GROUPS (1 = VERY NEGATIVE, 7 = VERY POSITIVE)

Explicit Biases...

1. Are associations, attitudes, or stereotypes that we know about and claim as our own.
2. Arise from shared cultural knowledge, personal experience, and explicit biases.
3. Can be measured with self-report.



ANIMAL WELFARE DEMOGRAPHICS



In the aggregate, participants showed an implicit preference for White people over Black people, Non-Hispanic people over Hispanic people, and rich people over poor people.

These results stood in contrast to Self-reported preferences for Black people over White people, Hispanic people over Non-Hispanic people, and poor people over rich people.

In others words, we often claim not to be biased when in fact we are.

INCLUSION = LIFESAVING

Research sponsored in party by:



Your Pet, Our Passion.®

