

State of Iowa

FOOT-AND-MOUTH DISEASE
RESPONSE AND RECOVERY PLAN

Final Draft

May 21, 2001

Thomas J. Vilsack, Governor

Patty Judge, Secretary of Agriculture

Ellen M. Gordon, Administrator,
Emergency Management Division

State of Iowa
FOOT-AND-MOUTH DISEASE RESPONSE AND RECOVERY PLAN

Signatures of Approval

Thomas J. Vilsack, Governor

Patty Judge, Secretary of Agriculture

John Schiltz, State Veterinarian

General Ron Dardis, Director, Iowa Department of Public Defense

Ellen M. Gordon, Administrator, Iowa Emergency Management Division

Jeffrey R. Vonk, Director, Iowa Department of Natural Resources

E.A. "Penny" Westfall, Director, Iowa Department of Public Safety

Mark F. Wandro, Director, Iowa Department of Transportation

Steve C. Gleason, Director, Iowa Department of Public Health

State of Iowa
FOOT-AND-MOUTH DISEASE RESPONSE AND RECOVERY PLAN

Contents

I.	Introduction	1
	A. Purpose.....	1
	B. Scope.....	1
	C. Glossary and Acronym List	1
	D. Plan Activation and Lines Of Succession.....	1
	E. Action Level Definitions.....	2
	F. Responsible Agencies	3
	G. Legal Basis	3
II.	Planning Considerations	3
	A. Situation Overview	3
	B. Assumptions.....	4
	C. Policies.....	5
III.	Concept of Operations	6
	A. Goals	6
	B. State Agency Responsibilities.....	7
	Office of The Governor	7
	Iowa Department of Agriculture and Land Stewardship	8
	State Veterinarian (IDALS).....	11
	Emergency Management Division	15
	Department of Natural Resources.....	17
	Department of Public Safety	18
	Department of Transportation	19
	Department of Public Health.....	21
	Iowa National Guard.....	21
	Iowa State University Extension Service	22
	ISU College of Veterinary Medicine	23
	C. Federal Interface	23
	US Department of Agriculture.....	24
	FEMA	27
	D. Operational Overview.....	27
	Prevention	27
	Direction, Control, Coordination, and Lines Of Communication	28
	Surveillance and Detection	29
	Testing, Quarantines, Cleaning and Disinfection, and Contact Tracing.....	30
	Depopulation.....	32
	Carcass Disposal	32
	Recovery	33
IV.	Plan Development, Testing, and Maintenance	33

State of Iowa
FOOT-AND-MOUTH DISEASE RESPONSE AND RECOVERY PLAN

List of Attachments

Attachment 1: Glossary	34
Attachment 2: Acronym List	35
Attachment 3: Sample Governor’s Proclamation of Disaster Emergency.....	36
Attachment 4: Animal Health Emergency Response Team	37
Attachment 5: Concept of Statewide Organization for Response to a Foot-and-Mouth Outbreak.....	38
Attachment 6: Major Susceptible Animal Producer Groups and Non-governmental Response Entities	39
Attachment 7: Situation Maps	40

State of Iowa
FOOT-AND-MOUTH DISEASE RESPONSE AND RECOVERY PLAN

I. INTRODUCTION

A. Purpose

To identify, assign, and coordinate all activities necessary for preventing, responding to, and recovering from an outbreak of foot-and-mouth disease (FMD) in the State of Iowa.

B. Scope

This plan:

- Is activated to meet the goals of FMD prevention, surveillance, and detection statewide when at least one case of the disease is confirmed in the United States, Canada, or Mexico but has not been diagnosed in Iowa.
- Is activated for the above-named goals as well as all of the other primary goals set forth in this plan (containment, eradication, and recovery) when FMD is presumed or confirmed to exist within Iowa's borders.
- Describes state resources made available and state agency actions taken to meet the goals set forth in this plan when an FMD outbreak occurs in Iowa or poses an imminent threat to the state.
- Describes the expected actions that will be taken by local government, the federal government, and affected industries and their associations.
- Is designed to work in concert with the Iowa Emergency Plan, which will most likely be implemented in conjunction with this plan to obtain state resources and manage them optimally.
- Will at some point be expanded to address all animal-related disasters and will be incorporated into the Iowa Emergency Plan.
- Does not supercede existing Iowa laws and administrative rules.

C. Glossary and Acronym List

See attachments 1 and 2.

D. Plan Activation and Lines of Succession

The mechanism for activating this plan is a Governor's Proclamation of Disaster Emergency. A draft proclamation that will support state agency activities at the four Action Levels described in this plan has been prepared and is on file with the Emergency Management Division (see attachment 3).

An Emergency Proclamation, and therefore the activation of this plan, is initiated by the Governor. Generally, the Governor's decision to issue an Proclamation of Disaster Emergency will be made in consultation with the

Director of the Department of Public Defense (i.e., the Adjutant General of the State of Iowa) and/or the Administrator of the Iowa Emergency Management Division. In the special case of a disaster involving an outbreak of foot-and-mouth disease in North America, the Governor's office will also, to the fullest extent practicable, consult with the Secretary of Agriculture and Land Stewardship (or a designee) prior to issuing a Proclamation of Disaster Emergency.

Plan activation will occur in accordance with the action level definitions described below, unless the Governor determines that there is a compelling reason to act otherwise. The plan is intended to provide the Governor and other key state decisionmakers with a prudent and well-reasoned course of action based on the expertise and experience of qualified individuals from a variety of disciplines. However, nothing in the plan preempts the Governor's final authority with respect to all state-level executive-branch decisions associated with responding to and recovering from a disaster in this state. In particular, the preservation of the lives, health, safety, and, to a lesser extent, the property of all Iowans remains the ultimate goal of any emergency response and recovery effort.

In addition, nothing in this plan shall interfere with the authority of the Iowa Secretary of Agriculture to quarantine and embargo animals and animal products, as provided for in Chapter 163 of the Code of Iowa, or to exercise any authority granted to the Secretary in the Code of Iowa.

With respect to restrictions involving people or any property that is not an animal or an animal product, the State Veterinarian and the Iowa Secretary of Agriculture will work in an advisory capacity to the Governor or a designee, and will also play key roles in executing many of the provisions of this plan and the directives of the Governor. The United States Department of Agriculture (USDA) Area Veterinarian in Charge (AVIC) is the state's federal counterpart to the State Veterinarian. Coordination with USDA through the AVIC is an integral factor in the successful execution of this plan.

In the absence of the Governor, or when so delegated by the Governor, the Governor's authorities and responsibilities established under this plan shall be assumed by the Director of the Department of Public Defense or the Administrator of the Emergency Management Division.

E. Action Level Definitions

Action Level 4 - Confirmed FMD case in the United States, Canada, or Mexico.

Action Level 3 - Presumptive positive FMD case in Iowa, as pronounced by the State Veterinarian.

Action Level 2 - Confirmed positive FMD case(s) in Iowa, as pronounced by the State Veterinarian, state and local capabilities have not been overwhelmed.

Action Level 1 - Confirmed positive FMD cases in Iowa, as pronounced by the State Veterinarian, state and local capabilities have been overwhelmed.

F. Responsible Agencies

Lead: Office of the Governor

Support: Iowa Department of Agriculture and Land Stewardship (IDALS)
Iowa Emergency Management Division (EMD)
Iowa Department of Natural Resources (DNR)
Iowa Department of Public Safety (DPS)
Iowa Department of Transportation (DOT)
Iowa Department of Public Health (DPH)
Iowa National Guard
Iowa State University Extension Service (ISU Extension)
Iowa State University College of Veterinary Medicine (ISU Vet College)

The USDA Area Veterinarian in Charge (AVIC) will play a central role in implementing this plan. For more information on the expected actions of USDA and the AVIC, refer to the “Federal Interface” section of this plan.

G. Legal Basis

Code of Iowa Chapter 159 (Department of Agriculture and Land Stewardship)

Code of Iowa Chapter 163 (Infectious and Contagious Diseases Among Animals)

Code of Iowa Chapter 167 (Use and Disposal of Dead Animals)

Code of Iowa Chapter 189A (Meat and Poultry Inspection)

Code of Iowa Chapter 29C (Emergency Management)

Iowa Administrative Code Chapter 61 (Dead Animal Disposal)

Iowa Administrative Code Chapter 64 (Infectious and Contagious Diseases)

II. PLANNING CONSIDERATIONS

A. Situation overview¹

FMD is a highly contagious and economically devastating disease of cattle and swine. It also affects sheep, goats, deer, and other cloven-hoofed ruminants. Many affected animals recover, but the disease leaves them debilitated. FMD causes severe losses in the production of meat and milk. Because it spreads

¹ Sources: Press release from the Office of Governor Vilsack dated April 2, 2001; Special Report produced by the FEMA Information Coordination Unit, dated March 27, 2001.

widely and rapidly and because it has grave economic as well as physical consequences, FMD is one of the animal diseases that livestock owners dread most. The disease does not affect food safety and cases in humans are extremely improbable. Nearly 100 percent of exposed animals would become infected. An FMD outbreak in the United States could potentially cost the U.S. livestock industry billions of dollars in losses in the first year.

Heat, low humidity, or some disinfectants can kill off the FMD virus. It is only rarely fatal in domesticated animals, although it is more likely to kill very young animals. There is no cure for the disease, and it usually runs its course in two or three weeks with most animals recovering, although some animals take up to six months to fully recover.

Iowa livestock consists of nearly 15.5 million head of swine, 3.7 million head (includes dairy) of cattle, and 265,000 head of sheep, comprising a multi-billion-dollar-a-year industry. The state also has a free-range deer population in excess of 300,000, providing a difficult to control means of carrying this highly contagious disease throughout the state. See Attachment 7, Situation Analysis, for more detailed situation information, represented on a series of maps.

B. Assumptions

- If FMD is diagnosed in Iowa, DNR will need to consider waiving certain environmental protection restrictions to facilitate the timely and efficient disposal of euthanized animals.
- FMD will first be detected by private practicing veterinarians, animal owners, local animal control officers, DNR Officers, market operators, and/or inspectors at livestock markets and slaughter plants.
- The presence of FMD in Iowa may result in the creation and enforcement of movement controls affecting people, animals, personal property, and animal products.
- Large quantities of deer and/or other wildlife may need to be depopulated to prevent the spread of FMD once it has been introduced into the state.
- If FMD is diagnosed in the United States, producers and veterinarians will respect quarantine restrictions and practice prescribed cleaning and disinfecting procedures.
- Many private practicing veterinarians will agree to assist the State Veterinarian and/or the AVIC with FMD detection and response activities.
- The USDA Area Veterinarian in Charge (AVIC) may hire private practicing veterinarians as temporary federal employees.
- The USDA will establish and enforce prohibitions and restrictions as necessary to prevent the introduction of FMD into the United States.
- If a case of FMD is confirmed in the U.S., a presidential declaration of emergency will likely be requested to implement the Federal Response Plan and the U.S. Secretary of Agriculture may issue a Declaration of Extraordinary Emergency. These declarations would release funds for federal agencies to provide assistance to all states, including but not limited

to funds for indemnity of livestock that are euthanized for the purpose of eradicating FMD.

- Local fire departments and area hazmat teams will provide personnel, equipment, supplies, and in some instances, decontamination training for the purpose of establishing and operating cleaning and disinfection stations.
- Producers, private practicing veterinarians, and others with custody or knowledge of susceptible animals will immediately report suspected cases of FMD to the State Veterinarian and, when possible, to the AVIC.
- Producers and private practicing veterinarians will respect quarantine restrictions, observe established cleaning and disinfecting procedures and maintain accurate records of their activities.
- State requests for county and municipal resources, including personnel, equipment, and supplies, will be coordinated through the appropriate County Emergency Management Agency whenever practicable.
- Municipal and county engineer's offices or public works agencies will provide personnel and equipment to bury euthanized livestock.
- Local law enforcement agencies will enforce restrictions on the movement of people, vehicles, equipment, and livestock, and restricted products into and out of quarantined areas.
- Livestock producers will keep accurate and up-to-date records of all livestock movements, which will be furnished to the State Veterinarian upon request.
- The American Red Cross will provide a variety of support services to affected individuals, families, and businesses including, but not limited to, crisis counseling, critical incident stress management, community briefings/debriefings, and support groups.
- The American Red Cross will provide critical incident stress management services to the volunteer and paid workers involved in responding to an FMD outbreak in Iowa.

C. Policies

- The Iowa Department of Agriculture and Land Stewardship (IDALS), as well as state agriculture agencies throughout the country, are routinely called upon to investigate reports of animals exhibiting symptoms of what could potentially be FMD. Receipt of these reports and the associated follow-up investigations are considered to be normal activities by IDALS veterinary staff and will not result in the activation of this plan. Only when an investigation of such a report leads to a presumptive or a confirmed FMD diagnosis in Iowa or a confirmed FMD diagnosis elsewhere in North America will this plan be activated.
- The Iowa Department of Agriculture and Land Stewardship (IDALS) and the Iowa Department of Natural Resources are responsible for animal health concerns within the state for agricultural animals and wildlife, respectively.

- FMD response and recovery efforts will be managed by a unified command consisting of representatives of the Iowa Departments of Agriculture and Land Stewardship, Public Defense, Public Safety, Transportation, and Natural Resources, with oversight from the Office of the Governor.
- The Iowa Department of Public Health will be consulted before undertaking any activity that may have an immediate or long-term effect on human life, health, or safety.
- All infected livestock or infected livestock carcasses brought to a packing plant must be harvested or destroyed and may not leave that facility.

III. CONCEPT OF OPERATIONS

A. Goals

This plan is organized around five major goals related to keeping Iowa free of FMD, and in the event the disease does manifest itself within the state, eliminating it as quickly, humanely, and inexpensively as possible. One or more of these goals is addressed at each of the four Action Levels defined in the introduction to the plan. These goals are described below:

Goal 1 – Prevention: To minimize the likelihood of an outbreak of FMD within Iowa's borders through ongoing information and education programs targeting veterinarians, livestock producers, affiliated industries, and the general public.

Goal 2 – Surveillance and Detection: To track and monitor instances of FMD throughout the country and maintain close ties with the agricultural community in the affected state(s); to rapidly detect any cases within Iowa's borders through inspections, testing, reporting of suspected cases by individuals, and other available and recommended methods.

Goal 3 – Containment: To stop the spread of FMD once it is present within Iowa's borders by taking actions which include, but are not limited to, the institution of quarantines, movement control restrictions, contact tracing, and the implementation of a vaccination program which is consistent with the national vaccination policies in effect at the time. (Note that the State Veterinarian may petition to have the prevailing national vaccination policies changed.)

Goal 4 – Eradication: To eliminate the presence of FMD within Iowa's borders by taking immediate actions which include, but are not limited to, depopulation of infected and exposed animals and/or herds, carcass disposal, and destruction or disinfection of contaminated products and materials.

Goal 5 – Recovery: To identify and implement all appropriate federal and state programs, support mechanisms, and technical services that directly assist individuals, families, businesses (including farms), and state and local governments with the process of recovering from the effects of an FMD outbreak.

B. State Agency Responsibilities

This section contains tables of agency responsibilities. Column one of each table lists the action(s) assigned to the agency. Column two lists the goal(s) supported by the actions. Each of the goals are described in the previous section. Column three indicates with a checkmark which Action Level(s) trigger the action described in column one. Action level definitions are located in the introduction.

Office of the Governor

ACTION	GOAL(S) ²	LEVEL ³			
		4	3	2	1
Issue a Proclamation of Disaster Emergency making state resources and emergency powers available for the purpose of preventing, detecting, containing and/or eliminating an FMD outbreak within Iowa as quickly, effectively, and humanely as practicable; assisting the citizens of the state to recover from the effects of the outbreak; and if state and local resources have been overwhelmed, taking all actions necessary to seek resources and assistance from other states and/or the federal government and/or non-governmental entities (see Attachment 3 for a sample Governor's Proclamation of Disaster Emergency).	All	✓	✓	✓	✓
Receive and, as deemed appropriate, respond to requests for assistance by the Iowa Secretary of Agriculture, other state agencies, and local governments by providing personnel, equipment, and supplies under the control of the executive branch.	All	✓	✓	✓	✓
Review, and then approve, deny, or seek additional information on all quarantine area proposals received from the Secretary of Agriculture that affect people or any property that is not an animal or an animal product.	Containment		✓	✓	✓
Participate in the state-level unified command by providing input and direction to the command group either at the SEOC or from a remote location.	All	✓	✓	✓	✓
With the guidance and assistance of IDALS and EMD, take all actions necessary to request and obtain resources from other states, the federal government, and non-governmental entities.	All				✓

² Goals descriptions are located on page 6.

³ Action level definitions are located on page 2.

Iowa Department of Agriculture and Land Stewardship⁴

ACTION (IDALS)	GOAL(S)	LEVEL			
		4	3	2	1
Provide personnel, equipment, and supplies at all action levels and in support of all goals described in this plan.	All	✓	✓	✓	✓
Provide immediate notification to the Office of the Governor, either directly or through EMD, of a confirmed FMD diagnosis in the United States, Canada, or Mexico.	Surveillance & Detection	✓			
Provide immediate notification to the Office of the Governor, either directly or through EMD, of a presumptive FMD diagnosis Iowa.	Surveillance & Detection		✓		
Provide immediate notification to the Office of the Governor, either directly or through EMD, of a confirmed FMD diagnosis Iowa.	Surveillance & Detection			✓	
Provide timely communication to the Office of the Governor, either directly or through EMD, when it appears likely that IDALS resources will no longer be adequate to cope with an FMD outbreak in Iowa.	All			✓	✓
Periodically produce and distribute educational materials aimed at recognizing, reporting, and preventing FMD. The target audience for these materials should include veterinarians, concentration points, industry groups, and producers of livestock and associated products. USDA, ISU Extension Service, IVMA, and industry groups may collaborate with IDALS to accomplish this task.	Prevention	✓	✓	✓	✓
In coordination with the Iowa State University Extension Service, provide continuing education events focusing on preventing, recognizing, and reporting FMD and other foreign animal diseases.	Prevention	✓	✓	✓	✓
Produce and distribute educational information to the general public describing international and interstate travel regulations and recommended practices.	Prevention	✓	✓	✓	✓

⁴ Some of the actions assigned to IDALS in this plan, and particularly those associated with prevention and/or surveillance and detection, are similar to activities that the department performs on an ongoing basis to discharge its statutory obligations, comply with its established policies, and cope with situations it routinely encounters.

DRAFT DRAFT DRAFT DRAFT DRAFT

ACTION (IDALS)	GOAL(S)	LEVEL			
		4	3	2	1
Maintain and update key contacts lists, including the membership of the Animal Health Emergency Response Team (AHERT, see attachment 4).	All	✓	✓	✓	✓
Make site visits to slaughter plants, auction markets and other concentration points, diagnostic laboratories, and other appropriate locations for the purpose of raising awareness about FMD and educating personnel at these sites about recognizing, reporting, and preventing FMD.	Surveillance & Detection	✓	✓	✓	✓
Establish and maintain contact with state agriculture officials in affected states to monitor the effects of FMD outbreaks and the actions that are being taken to cope with them.	All	✓	✓	✓	✓
Implement a permitting system that will enable the State Veterinarian to waive any or all prohibitions in effect on the importation into Iowa of all livestock, meat and other produce, equipment, and other items identified as posing a high risk of transmitting FMD.	Prevention; Surveillance & Detection; Containment	✓	✓	✓	✓
Implement and enforce modified inspection standards for packing plant operations and procedures.	Surveillance & Detection	✓	✓	✓	✓
In conjunction with EMD, establish a central information collection point to which all FMD-related surveillance and detection information is sent and from which appropriate parties can obtain information.	Surveillance & Detection	✓	✓	✓	✓
In conjunction with DNR, survey susceptible wildlife for evidence of FMD through road kills, hunter kills, or other means.	Surveillance & Detection			✓	✓
When an FMD case has been confirmed in North America inform zoos and other facilities holding wildlife susceptible to FMD. Recommend that the facilities take protective measures, including closure of the facility to the public.	Prevention	✓			
Instruct zoos and other facilities holding FMD susceptible wildlife to close to the public until further notice.	Containment			✓	✓
In accordance with Code of Iowa Section 163.15, establish a procedure and valuation guidelines for appraising livestock that have been designated for euthanasia as part of an FMD eradication program. Note that federal procedures be put into effect that supercede those described in the Code of Iowa.	Eradication			✓	✓

ACTION (IDALS)	GOAL(S)	LEVEL			
		4	3	2	1
Provide personnel to oversee the livestock appraisal process at each FMD site to ensure established procedures and valuation guidelines are followed and to resolve any disputes.	Eradication			✓	✓
Through EMD, solicit resources from surrounding states, including technical assistance, personnel, equipment, and supplies when state resources have been exhausted.	Surveillance & Detection; Containment; Eradication				✓
Request indemnity monies from state and/or federal sources to indemnify owners of livestock euthanized as part of an FMD eradication effort.	Recovery			✓	✓
In conjunction with IDPH, develop and implement a public information and education campaign for the purpose of maintaining and/or re-establishing consumer confidence in meat and dairy products.	Recovery	✓	✓	✓	✓
In conjunction with USDA, ISU Extension Service, IVMA, and industry groups, produce and distribute educational materials aimed at assisting affected individuals and groups with the process of recovering from the effects of an FMD outbreak.	Recovery	✓	✓	✓	✓
When the disease has been eradicated from the state, notify zoos and other licensed facilities, which closed as a result of an FMD outbreak, that it is safe to reopen to the public.	Recovery			✓	✓
Provide an individual to serve as part of the unified command at the State Emergency Operations Center (SEOC). The SEOC unified command will consist of executive-level decisionmakers from IDALS, EMD, DNR, DPS, DPH, DOT, and the Iowa National Guard.	All	✓	✓	✓	✓
In conjunction with EMD, DNR, DPS, DOT and the Iowa National Guard, determine when and where to establish unified command posts at forward locations. These command posts will provide information to and receive direction from the State Emergency Operations Center (see attachment 5).	Surveillance & Detection; Containment; Eradication; Recovery			✓	✓
Provide an individual to share responsibility for establishing and maintaining a unified command at each forward location. The state-level unified command will consist of representatives from IDALS, DPD, DNR, DOT and DPS. Either EMD or the National Guard will provide a person to fill the DPD slot.	Surveillance & Detection; Containment; Eradication; Recovery			✓	✓

State Veterinarian (IDALS)⁵

ACTION (State Vet)	GOAL(S)	LEVEL			
		4	3	2	1
Provide state-level direction, leadership, and technical expertise to prevent, detect, contain, and/or eradicate a foot-and-mouth outbreak in Iowa.	All	✓	✓	✓	✓
Coordinate with EMD when the first FMD case is confirmed in North America to request a Proclamation of Disaster Emergency from the Governor's Office (see attachment 3 for a sample proclamation); request that EMD activate the State Emergency Operations Center.	All when the first FMD case is confirmed in North	✓			
Maintain current communication with state officials from each state/area with a confirmed FMD case and with contacts at USDA/APHIS/EP and USDA/APHIS/VS, including the USDA Area Veterinarian in charge (AVIC).	All	✓	✓	✓	✓
With the approval of the Secretary of Agriculture, order an embargo or prohibition on the importation of animals or animal products into Iowa.	Prevention	✓	✓	✓	✓
Periodically produce and distribute updates on foreign animal disease investigations in Iowa and elsewhere to veterinarians, USDA/APHIS/VS, and industry groups, ensuring that sensitive information is safeguarded to avoid unnecessary market impacts.	Prevention	✓	✓	✓	✓
Through an EMD request to DPS and DOT, implement checkpoints at Iowa's borders and along major transportation routes within the state to aid in the enforcement of importation restrictions and prohibitions.	Prevention	✓	✓	✓	✓
Issue traveler precautions in conjunction with USDA.	Prevention	✓	✓	✓	✓
Maintain communication with laboratories to aid in diagnosis of case submissions suspected of being positive for FMD.	Surveillance & Detection	✓	✓	✓	✓

⁵ Although the State Veterinarian is an IDALS employee, the assigned actions for this position are listed separately because of the central role of the State Vet in implementing this plan. As with the IDALS table, some of the actions assigned to the State Vet are similar to activities that the department performs on an ongoing basis to discharge its statutory obligations, comply with its established policies, and cope with situations it routinely encounters. This is particularly true of those actions associated with prevention and/or surveillance and detection.

ACTION (State Vet)	GOAL(S)	LEVEL			
		4	3	2	1
Arrange for foreign animal disease diagnostician (FADD) training for all state district veterinarians in need of such training.	Surveillance & Detection	✓	✓	✓	✓
Immediately trace and investigate recent importations into Iowa of animals or animal products from each state/region with a confirmed case.	Surveillance & Detection	✓	✓	✓	✓
Respond to foreign animal disease reporting in Iowa in conjunction with the AVIC. Within 24 hours of receiving a suspected case report, send a response team to the suspect site and initiate a foreign animal disease investigation, using a trained Foreign Animal Disease Diagnostician (FADD).	Surveillance & Detection	✓	✓	✓	✓
Collect factual information concerning confirmed cases and distribute to veterinarians, auction markets, concentration points, and industry groups.	Surveillance & Detection	✓	✓	✓	✓
If FMD is confirmed in North America, and after consultation with the AVIC, contact the personnel on the Animal Health Emergency Response Team (AHERT, see attachment 4) to advise team members that they may need to assemble at the State Emergency Operations Center.	Surveillance & Detection	✓			
For each site or set of contiguous sites containing a presumptive positive diagnosis, provide the Secretary of Agriculture with a proposed quarantine area. Each quarantine area will be surrounded by a buffer zone, with checkpoints around the buffer zone perimeter to restrict movement. The Secretary will review the proposal and relay it to the Office of the Governor, either directly or through EMD, to approve all restrictions involving people or any property that is not an animal or an animal product. Upon receiving concurrence from the Secretary and the Governor, issue a quarantine order corresponding to all approved areas.	Containment		✓		
Working with personnel and other resources provided by state (DPS) and local law enforcement agencies, and other state agencies as assigned, prevent the movement of presumptive diagnosis animals, susceptible domesticated animals, and animal products from quarantined areas as allowed under Code of Iowa Chapter 163.	Containment		✓		

ACTION (State Vet)	GOAL(S)	LEVEL			
		4	3	2	1
Direct state veterinary staff and other IDALS personnel to affected areas of the state to implement and/or oversee containment activities, including quarantine area determination/monitoring and cleaning and disinfection procedures.	Containment		✓	✓	✓
Remove quarantine restrictions when negative results are received from presumptive cases.	Containment		✓		
For each site or set of contiguous sites containing a confirmed positive diagnosis, provide the Secretary of Agriculture with a proposed quarantine area when that area has not been previously quarantined as a result of a presumptive case. A quarantine area will be surrounded by a buffer zone, with checkpoints around the buffer zone perimeter to restrict movement. The Secretary will review the proposal and relay it to the Office of the Governor, either directly or through EMD, to approve all restrictions involving people or any property that is not an animal or an animal product. Upon receiving concurrence from the Governor, issue a quarantine order corresponding to all approved areas.	Containment			✓	✓
Using personnel and other resources provided by state (DPS) and local law enforcement agencies, and other state agencies as assigned, prevent the movement of confirmed diagnosis animals, susceptible domesticated animals, and animal products from quarantined areas as allowed under Code of Iowa Chapter 163.	Containment			✓	✓
If it appears that FMD infection has spread to sites located adjacent to existing quarantine areas, propose expansion of the existing quarantine areas to the Secretary of Agriculture to provide adequate protection against further spread of the disease. The Secretary will review the proposal and relay it to the Office of the Governor, either directly or through EMD, to approve all restrictions involving people or any property that is not an animal or an animal product. Upon receiving concurrence from the Governor, issue a quarantine order corresponding to the additional approved areas and order testing of the affected herds and individual animals.	Containment			✓	

ACTION (State Vet)	GOAL(S)	LEVEL			
		4	3	2	1
Trace all herds and individual animals that have potentially been in contact with infected animals/premises, establish a quarantine of premises where these herds/animals are currently located (using the process already described in this section for quarantining premises with presumptive cases), and order testing.	Containment			✓	✓
Close slaughtering facilities and auction markets in the quarantine zone. Note that slaughtering facilities may be used for depopulation.	Containment			✓	✓
Establish cleaning and disinfecting operations at checkpoints around and within each quarantine area; monitor to ensure that correct procedures are in use.	Containment			✓	✓
Consider requesting, through DNR, depopulation of deer and other wildlife within each quarantine area, and possibly in an area surrounding the quarantine area, as determined in consultation with DNR.	Containment			✓	✓
Through EMD, coordinate with DNR to take actions to restrict wildlife movement outside of the quarantine area when deemed necessary and practical to do so.	Containment			✓	✓
Direct additional state veterinary staff and other IDALS personnel to affected areas of the state to implement and/or oversee and or assist with eradication activities, including depopulation and disposal.	Eradication			✓	✓
After the appraisal and indemnification process has been completed, order the euthanasia and disposal of animals designated for depopulation.	Eradication			✓	✓
In conjunction with the AVIC, request assistance from the Regional Emergency Animal Disease Eradication Organization (READEO).	Containment; Eradication				✓
Establish procedures (e.g., fax, e-mail, phone line) for receiving daily reports of all livestock movements from producers; record this information in a format that lends itself to efficient contact tracing and other investigative work.	Surveillance & Detection			✓	✓
Consider the implementation of vaccine control measures, in consultation with the AVIC and in accordance with the national policies currently in effect.	Containment				✓

ACTION (State Vet)	GOAL(S)	LEVEL			
		4	3	2	1
Reduce quarantine areas or remove quarantine restrictions as sites with confirmed cases are determined to be free of infection and notify the Office of the Governor of these changes.	Containment			✓	✓
With the assistance of the AVIC, seek recovery assistance through USDA, Farm Service Agency (FSA), and other designated and appropriate USDA agencies. Assistance may be in the form of low interest loans or grants to restock herds, depending on what is authorized at that time.	Recovery			✓	✓

Emergency Management Division

ACTION (EMD)	GOAL(S)	LEVEL			
		4	3	2	1
Based on the location and magnitude of an FMD outbreak, prepare a Proclamation of Disaster Emergency appropriate to the circumstances and send to the Governor's Office to approve and sign (see attachment 3 for a sample proclamation).	All	✓			
Provide coordination of state government, federal government, and private personnel, equipment, and supplies at all action levels and in support of all goals described in this plan.	All	✓	✓	✓	✓
Coordinate all state government requests for federal assistance for the purpose of preventing, detecting, responding to, and recovering from an FMD outbreak.	All			✓	✓
Provide timely communication to the Office of the Governor when it appears likely that state resources will no longer be adequate to cope with an FMD outbreak in Iowa.	All			✓	
Upon receiving notice of a confirmed FMD case in the North America, activate the State Emergency Operations Center (SEOC) and notify the contacts from all state agencies included in this plan that an agency representative either should report to the SEOC, or should prepare to be asked to do so in the near future.	All	✓			
A conditions warrant, expand the level of State Emergency Operations Center activation to accommodate additional state agency personnel, federal personal, and/or private industry personnel.	All		✓	✓	✓

ACTION (EMD)	GOAL(S)	LEVEL			
		4	3	2	1
Provide or coordinate the use of alternate communications capabilities in support of FMD response and recovery efforts, to include the Iowa Communications Network (including video), Amateur Radio (voice), Public Safety Radio (limited, voice), Public Safety Iowa System (limited, data), NAWAS/IAWAS systems (limited, voice).	All			✓	✓
Establish and implement communications procedures with all field locations to ensure that information flow to and from these locations is accurate, complete, orderly, efficient, and reliable.	All	✓	✓	✓	✓
Provide or coordinate the use of emergency public notification systems, including the Emergency Alert System (EAS) and the NOAA Weather Radio system.	All	✓	✓	✓	✓
In conjunction with IDALS, develop and distribute emergency information to the public and the media in accordance with the Iowa Emergency Plan.	All	✓	✓	✓	✓
With the assistance and technical expertise of the State Veterinarian and other IDALS personnel, establish and staff a hotline for responding to public inquiry, with the hours of operation to be determined and then publicized.	All	✓	✓	✓	✓
Provide personnel, equipment, and supplies at all action levels and in support of all goals described in this plan and in support of the Iowa Emergency Plan.	All	✓	✓	✓	✓
Provide an individual to serve as part of the unified command at the State Emergency Operations Center (SEOC). The SEOC unified command will consist of executive-level decisionmakers from IDALS, EMD, DNR, DPS, DPH, DOT, and the Iowa National Guard.	All	✓	✓	✓	✓
In conjunction with IDALS, DNR, DPS, DOT, and the Iowa National Guard, determine when and where to establish unified command posts at forward locations. These command posts will provide information to and receive direction from the State Emergency Operations Center (see attachment 5).	Surveillance & Detection; Containment; Eradication; Recovery			✓	✓
Provide an individual to share responsibility for establishing and maintaining a unified command at each forward location. The state-level unified command will consist of representatives from IDALS, DPD, DNR, DOT and DPS. Either EMD or the National Guard will provide a person to fill the DPD slot.	Surveillance & Detection; Containment; Eradication; Recovery			✓	✓

Department of Natural Resources

ACTION (DNR)	GOAL(S)	LEVEL			
		4	3	2	1
Implement measures to prevent the movement of susceptible and carrier wildlife from quarantined areas, including the provision of personnel and equipment for depopulating deer.	Containment			✓	✓
Establish a protocol for determining what areas, if any, within a quarantine area are environmentally suitable for burying livestock carcasses; apply this protocol as the need arises.	Eradication			✓	✓
Establish procedures for surveying susceptible wildlife populations in quarantine areas and surrounding territory to determine the incidence of FMD in those populations. Such procedures may include inspection of road kills and hunter kills.	Surveillance & Detection; Containment			✓	✓
Conduct surveys of susceptible wildlife populations in quarantine areas and surrounding territory to determine the incidence of FMD in those populations. Report findings to the Office of the Governor and all unified command agencies.	Surveillance & Detection; Containment			✓	✓
Should burning become necessary for carcass disposal, assess all available accelerant and fuel options for effectiveness and environmental impact.	Eradication			✓	✓
With concurrence from the Office of the Governor, and when needed clearance from appropriate federal regulating agency or agencies, temporarily waive environmental restrictions as to allow for timely and efficient disposal of livestock carcasses.	Eradication			✓	✓
Provide personnel, equipment, and supplies at all action levels and in support of all goals described in this plan and in support of the Iowa Emergency Plan.	All	✓	✓	✓	✓
Provide an individual to serve as part of the unified command at the State Emergency Operations Center (SEOC). The SEOC unified command will consist of executive-level decisionmakers from IDALS, EMD, DNR, DPS, DPH, DOT, and the Iowa National Guard.	All	✓	✓	✓	✓
In conjunction with IDALS, EMD, DPS, DOT, and the Iowa National Guard, determine when and where to establish unified command posts at forward locations. These command posts will provide information to and receive direction from the State Emergency Operations Center (see attachment 5).	Surveillance & Detection; Containment; Eradication; Recovery			✓	✓

ACTION (DNR)	GOAL(S)	LEVEL			
		4	3	2	1
Provide an individual to share responsibility for establishing and maintaining a unified command at each forward location. The state-level unified command will consist of representatives from IDALS, DPD, DNR, DOT, and DPS. Either EMD or the National Guard will provide a person to fill the DPD slot.	Surveillance & Detection; Containment; Eradication; Recovery			✓	✓

Department of Public Safety

ACTION (DPS)	GOAL(S)	LEVEL			
		4	3	2	1
Enforce restrictions on the movement of livestock, meat, and related products and equipment across Iowa's borders.	Prevention	✓			
Enforce restrictions on the movement of people, vehicles, livestock, meat, and related products and equipment within Iowa's borders as requested by local law enforcement.	Containment		✓	✓	✓
In conjunction with the State Veterinarian, establish where vehicles will be allowed to enter/exit along the perimeter of the quarantine area and designate these as checkpoints.	Containment		✓	✓	✓
Enforce restrictions on the movement of people, vehicles, and livestock out of quarantined areas at designated checkpoints, as requested by local law enforcement.	Containment		✓	✓	✓
When monitoring and enforcing checkpoints, ensure that all vehicles leaving the quarantine area comply with established cleaning and disinfection procedures.	Containment		✓	✓	✓
Monitor quarantine area entry and exit routes that are not designated checkpoints and prevent their use.	Containment		✓	✓	✓
Investigate any evidence of criminal or terrorist origins of the FMD outbreak.	Surveillance & Detection			✓	✓
Provide personnel, equipment, and supplies at all action levels and in support of all goals described in this plan and in support of the Iowa Emergency Plan.	All	✓	✓	✓	✓
Provide an individual to serve as part of the unified command at the State Emergency Operations Center (SEOC). The SEOC unified command will consist of executive-level decisionmakers from IDALS, EMD, DNR, DPS, DPH, DOT, and the Iowa National Guard.	All	✓	✓	✓	✓

ACTION (DPS)	GOAL(S)	LEVEL			
		4	3	2	1
In conjunction with IDALS, DNR, and EMD, DOT and the Iowa National Guard, determine when and where to establish unified command posts at forward locations. These command posts will provide information to and receive direction from the State Emergency Operations Center (see attachment 5).	Surveillance & Detection; Containment; Eradication; Recovery			✓	✓
Provide an individual to share responsibility for establishing and maintaining a unified command at each forward location. The state-level unified command will consist of representatives from IDALS, DPD, DNR, DOT, and DPS. Either EMD or the National Guard will provide a person to fill the DPD slot.	Surveillance & Detection; Containment; Eradication; Recovery			✓	✓

Department of Transportation

ACTION (DOT)	GOAL(S)	LEVEL			
		4	3	2	1
At Iowa borders, inspect incoming commercial vehicles for livestock, meat and other produce, agricultural equipment, and other items covered under restrictions and prohibitions invoked or established in response to an FMD outbreak outside of Iowa. Deny entry into the state as appropriate.	Prevention	✓			
When necessary for the purpose of better coordinating inspection activities and/or improving information flow, establish forward command posts at strategic locations along Iowa's borders, to be staffed by DOT and DPS law enforcement personnel.	Prevention; Containment	✓	✓	✓	✓
Create signage at state borders as appropriate to provide information about interstate restrictions.	Prevention	✓			
Inspect commercial vehicles that are entering or traveling within Iowa for livestock, meat and other produce, agricultural equipment, and other items covered under transportation restrictions and prohibitions invoked or established in response to an FMD outbreak in Iowa. Take all appropriate action necessary, including detaining or turning back restricted/prohibited vehicles.	Containment		✓	✓	✓
Create and place signage and barriers on Iowa roads to support quarantine and other movement control restrictions.	Containment		✓	✓	✓

ACTION (DOT)	GOAL(S)	LEVEL			
		4	3	2	1
In conjunction with local fire departments and area hazmat teams, and under the guidance of IDALS, and after receiving adequate training and supplies, provide assistance with the operation of cleaning and disinfection stations at all quarantine area perimeter checkpoints.	Containment		✓	✓	✓
Coordinate the restriction of airspace over quarantine areas with private operators, local government, and the Federal Aviation Administration (FAA).	Containment		✓	✓	✓
Provide personnel and equipment to assist with the burial of livestock when municipal and county public works capabilities have been overwhelmed.	Eradication			✓	✓
Provide personnel, equipment, and supplies at all action levels and in support of all goals described in this plan and in support of the Iowa Emergency Plan.	All	✓	✓	✓	✓
Build or reinforce roadways for the transport of heavy equipment to sites designated for the disposal of animal carcasses.	All			✓	✓
Provide an individual to serve as part of the unified command at the State Emergency Operations Center (SEOC). The SEOC unified command will consist of executive-level decisionmakers from IDALS, EMD, DNR, DPS, DPH, DOT, and the Iowa National Guard.	All	✓	✓	✓	✓
In conjunction with IDALS, DNR, EMD, DPS and the Iowa National Guard, determine when and where to establish unified command posts at forward locations. These command posts will provide information to and receive direction from the State Emergency Operations Center (see attachment 5).	Surveillance & Detection; Containment; Eradication; Recovery			✓	✓
Provide an individual to share responsibility for establishing and maintaining a unified command at each forward location. The state-level unified command will consist of representatives from IDALS, DPD, DNR, DOT, and DPS. Either EMD or the National Guard will provide a person to fill the DPD slot.	Surveillance & Detection; Containment; Eradication; Recovery			✓	✓

Department of Public Health

ACTION (DPH)	GOAL(S)	LEVEL			
		4	3	2	1
Provide public health information about FMD to consumers of meat and dairy products to alleviate unfounded fears, and thereby reducing unnecessary economic disruption.	Recovery	✓	✓	✓	✓
Advise the Office of the Governor, and all unified command state agencies about the public health effects of each disposal option under consideration.	Eradication			✓	✓
Using established state public information channels, ensure that the public is informed about the adverse health consequences of the disposal method(s) ultimately selected and what personal protective measures, if any, are recommended.	Eradication			✓	✓
Provide personnel to augment IDALS capabilities in surveillance and detection, contact tracing, and other investigative work.	Containment			✓	✓
Provide personnel, equipment, and supplies at all action levels and in support of all goals described in this plan and in support of the Iowa Emergency Plan.	All	✓	✓	✓	✓
Provide an individual to serve as part of the unified command at the State Emergency Operations Center (SEOC). The SEOC unified command will consist of executive-level decisionmakers from IDALS, EMD, DNR, DPS, DPH, DOT, and the Iowa National Guard.	All	✓	✓	✓	✓

Iowa National Guard

ACTION (National Guard)	GOAL(S)	LEVEL			
		4	3	2	1
Provide personnel, equipment, and supplies at all action levels and in support of all goals described in this plan.	All	✓	✓	✓	✓
Provide personnel and other resources to enforce restrictions on the movement of people, vehicles, and/or livestock out of quarantined areas. National Guard resources will only be used as a last resort (i.e., when local and other state capabilities have been overwhelmed).	Containment		✓	✓	✓

ACTION (National Guard)	GOAL(S)	LEVEL			
		4	3	2	1
Provide personnel and equipment to assist with the depopulation of livestock when other means (i.e., injections and captive-bolt guns) are inadequate to accomplish the task in a timely manner.	Eradication			✓	✓
Provide personnel and equipment to assist with the burial of livestock when municipal, county, and state DOT capabilities have been overwhelmed.	Eradication			✓	✓
Provide an individual to serve as part of the unified command at the State Emergency Operations Center (SEOC). The SEOC unified command will consist of executive-level decisionmakers from IDALS, EMD, DNR, DPS, DPH, DOT, and the Iowa National Guard.	All	✓	✓	✓	✓
In conjunction with IDALS, DNR, and DPS, DOT, and EMD, determine when and where to establish unified command posts at forward locations. These command posts will provide information to and receive direction from the State Emergency Operations Center (see attachment 5).	Surveillance & Detection; Containment; Eradication; Recovery			✓	✓
Provide an individual to share responsibility for establishing and maintaining a unified command at each forward location. The state-level unified command will consist of representatives from IDALS, DPD, DNR, DOT, and DPS. Either EMD or the National Guard will provide a person to fill the DPD slot.	Surveillance & Detection; Containment; Eradication; Recovery			✓	✓

Iowa State University Extension Service

ACTION (ISU Extension)	GOAL(S)	LEVEL			
		4	3	2	1
Serve as an information source at the state, regional, county, and local level using electronic and conventional technologies including ICN programs, satellite communication to all county offices, and e-mail to veterinarians, extension personnel, Iowa Veterinary Medical Association Leaders, producers, commodity organizations, farm organizations, consumers, and the general public.	All	✓	✓	✓	✓
Conduct Continuing Education programs for veterinarians on FMD diagnosis, control, and eradication.	All	✓	✓	✓	✓

ACTION (ISU Extension)	GOAL(S)	LEVEL			
Organize, advertise, and conduct statewide, regional, county, and local programs to satisfy IDALS and USDA/APHIS information dissemination needs.	All	✓	✓	✓	✓
Prepare personnel who staff the Iowa Concern Hotline to respond appropriately to FMD-related questions and concerns. Iowa Concern Hotline provides toll-free, 24 hour-a-day, 7 day-a-week confidential assistance and referral for stress, legal questions and financial concerns for Iowa families in times of crisis and change.	All	✓	✓	✓	✓
Supply information to key individuals in communities affected or threatened by FMD, including but not limited to: the clergy, other social service agencies, public and private schools, teachers, bankers, local environmental groups, and agri-business firms.	All		✓	✓	✓

ISU College of Veterinary Medicine

ACTION	GOAL(S)	LEVEL			
Maintain a high level of biosecurity on laboratory premises.	Prevention	✓	✓	✓	✓
Immediately report suspected cases of FMD to the State Veterinarian or the AVIC.	Surveillance & Detection	✓	✓	✓	✓

C. Federal Interface

Due to the highly contagious nature of FMD, as well as the economically devastating consequences of a large-scale outbreak, the federal government, and in particular the US Department of Agriculture (USDA), would become involved in assisting with Iowa's prevention, response, and/or recovery efforts as soon as a case is diagnosed in North America. This section of the plan lists the specific actions that the USDA and other federal agencies would be expected to take, based on conversations and/or understandings between those agencies and State of Iowa officials. It is important to emphasize here that this is the State of Iowa's plan, and therefore its applicability is limited to the use and coordination of state government resources and activities.

United States Department of Agriculture

ACTION (USDA)	GOAL(S)	LEVEL			
Provide appropriate staff to report to the State Emergency Operations Center.	All	✓	✓	✓	✓
Through the Area Veterinarian in Charge (AVIC) for Veterinary Services (VS) (part of USDA's Animal and Plant Health Inspection Service, or APHIS), provide federal-level direction, leadership, and technical expertise to accomplish the prevention, surveillance and detection, containment, and eradication of a foot-and-mouth outbreak in Iowa.	All	✓	✓	✓	✓
Through the AVIC, assist the State Veterinarian, other IDALS officials, and EMD with requests for federal resources to assist state government with the preventing, responding to, and recovering from an FMD outbreak.	All	✓	✓	✓	✓
Through APHIS/Plant Protection and Quarantine (PPQ), inspect luggage arriving with passengers from foreign countries that have FMD. Meats and meat products are prohibited from entry and are confiscated and incinerated. Passengers are required to declare whether they have been on a farm if arriving from an FMD affected country.	Prevention	✓	✓	✓	✓
Through APHIS/Legislative and Public Affairs (LPA), increase awareness of FMD and methods of prevention. USDA/APHIS/LPA provides information to state departments of agriculture, national and local media, and livestock commodity groups to use in public awareness campaigns.	Prevention	✓	✓	✓	✓
Advise travelers from countries with FMD to shower, launder clothing, clean and disinfect footwear, and refrain from contact with livestock for 5 days.	Prevention	✓	✓	✓	✓
Encourage a heightened frequency of inspections at garbage feeding operations located in states where these are allowed. Note that commercial garbage feeding of livestock is illegal in Iowa.	Prevention	✓	✓	✓	✓
Increase awareness of FMD risks in the USDA's FSIS (Food Safety and Inspection Service). FSIS inspects animals for FMD and other diseases at slaughter plants.	Prevention; Surveillance & Detection	✓	✓	✓	✓
Increase awareness of FMD risks in biologics manufacturers through the Center for Veterinary Biologics.	Prevention	✓	✓	✓	✓
Increase awareness among vet students at accreditation orientations.	Prevention	✓	✓	✓	✓

ACTION (USDA)	GOAL(S)	LEVEL			
Implement interstate restrictions to stop susceptible animals, animal products, carcasses, and other high-risk items, such as used farm equipment, from FMD affected areas from entering into Iowa.	Prevention	✓	✓	✓	✓
Through the AVIC, provide the State Veterinarian with updates, obtained through consultation with USDA/APHIS/VS Emergency Programs Staff, on the status of FMD in other states.	Prevention; Surveillance & Detection Prevention	✓	✓	✓	✓
In conjunction with IDALS, visit slaughter plants, livestock markets, hog buying stations, diagnostic laboratories, and zoos to increase awareness of and vigilance for FMD.	Prevention	✓			
Work with state veterinarians/agricultural agencies to establish and maintain quarantines in affected areas within the US but outside of Iowa.	Prevention	✓			
In conjunction with IDALS, provide information to livestock commodity groups, livestock marketing and slaughtering facilities, private practicing veterinarians through the Iowa Veterinary Medical Association, and producers through the Iowa State University Extension Service, emphasizing the need to report suspected cases to the State Veterinarian or AVIC.	Prevention; Surveillance & Detection Prevention	✓	✓	✓	✓
Through the AVIC, and in consultation with the State Veterinarian, contact the personnel on the Animal Health Emergency Response Team (AHERT, see attachment 4) to advise team members that they may need to assemble at the State Emergency Operations Center.	All	✓			
When a presumptive positive case is diagnosed in Iowa, the AVIC will, whenever possible, join the State Veterinarian in requesting that all or a portion of the Animal Health Emergency Response Team (AHERT, see attachment 4) assemble at the State Emergency Operations Center.	All		✓		
When a confirmed positive case is diagnosed in Iowa, the AVIC will, whenever possible, join the State Veterinarian in requesting that the entire Animal Health Emergency Response Team (AHERT, see attachment 4) assemble at the State Emergency Operations Center, if not already assembled there.	All			✓	✓
Through the AVIC, immediately notify the State Veterinarian of any new suspected FMD cases in Iowa.	Surveillance & Detection	✓	✓	✓	✓

ACTION (USDA)	GOAL(S)	LEVEL			
Through the AVIC, and with the State Veterinarian, dispatch a foreign animal disease diagnostician (FADD) to investigate any reports of suspected FMD. FADDs may be federal or state employees. Investigators will be on the farm within 24 hours of a report made by a farmer or veterinarian.	Surveillance & Detection	✓	✓	✓	✓
Through the AVIC, report the initiation of an FMD investigation to USDA/APHIS/EP (Emergency Programs) staff, the USDA/APHIS Regional Director, and the State Veterinarian.	Surveillance & Detection	✓	✓	✓	✓
Through the AVIC, receive on-farm investigation findings from the FADD. The FADD also provides and discusses this information with EP staff and the State Veterinarian.	Surveillance & Detection	✓	✓	✓	✓
When the FADD findings indicate that FMD is unlikely, AVIC advises the appropriate commodity group leader and the State Veterinarian.	Surveillance & Detection	✓	✓	✓	✓
Through the AVIC, assist the State Veterinarian, with decisions about quarantining the areas surrounding infected animals, in accordance with the standards and procedures described in the <u>Foot-and-Mouth Disease Emergency Disease Guidelines</u> (FMD "Red Book, revised June 1992, reprinted March 2001).	Containment		✓	✓	✓
In consultation with the State Veterinarian, coordinates with DNR to prevent the spread of FMD through the movement of wildlife.	Containment			✓	✓
In cooperation with IDALS staff, trace movements of animals and assist the state with establishing and enforcing state quarantines, and/or enforce federal quarantines.	Containment			✓	✓
Authorize the use of the FMD vaccine bank in accordance with prevailing national policies controlling this action.	Containment			✓	✓
Provide FADDs, animal health technicians, and other appropriately trained personnel to assist in the depopulation and disposal of affected herds and the disposal of contaminated products.	Containment; Eradication			✓	✓

ACTION (USDA)	GOAL(S)	LEVEL			
In conjunction with the State Veterinarian, consider asking READEO for assistance.	Surveillance & Detection; Containment; Eradication			✓	
Request surveillance and detection, containment, and eradication assistance from the Regional Emergency Animal Disease Eradication Organization (READEO) when the state's capabilities to achieve these goals have been overwhelmed. The READEO establishes a presence in Iowa and assists the state vet and AVIC with the state's efforts to cope with an FMD outbreak.	Surveillance & Detection; Containment; Eradication				✓
Detail USDA personnel to affected areas if requested by state officials or when deemed necessary.	Containment; Eradication			✓	✓
Through EMD, request support from other federal agencies/entities such as the Federal Emergency Management Agency and the U.S. Military.	All	✓	✓	✓	✓

Federal Emergency Management Agency

ACTION	GOAL(S)	LEVEL			
If a response becomes too large for USDA to handle, USDA will ask other Federal agencies to provide support under the framework of the Federal Response Plan. Under these circumstances FEMA could be tasked to act as a broker or agent for USDA, for the purpose of coordinating Federal activities. USDA in turn would reimburse FEMA and, as applicable, other Federal agencies.	All	✓	✓	✓	✓

D. Operational Overview

Prevention

The Iowa Department of Agriculture and Land Stewardship (IDALS) will maintain close communication with the department of agriculture in each state or North American country with a confirmed case of FMD for the purpose of obtaining:

- Information on the extent and effects of the outbreak(s);

- An overview of the prevention, response, and recovery actions either planned or underway to cope with the disease;
- An assessment of the effectiveness of these actions.

When an FMD case has been confirmed in North America (i.e., at Action Level 4 under this plan), state public information professionals, led by IDALS and the Emergency Management Division (EMD), will work with the State Veterinarian and USDA's Area Veterinarian in Charge (AVIC) to create and distribute informational and educational training materials and programs for veterinarians, livestock producers, associated industries, and the general public (see attachment 6 for a list Susceptible Animal Producer Groups and Other Non-governmental Stakeholders/Responders). These materials may include, but are not limited to, fact sheets, posters, videos, and brochures. The priority is to educate those most likely to first see suspicious symptoms or clinical signs, so that they will know when and how to contact the State Veterinarian and/or the AVIC. Note that some or all of these activities may be underway prior to confirmation of FMD in North America.

Direction, Control, Coordination, and Lines of Communication

At Action Level 4, the State Emergency Operations Center (SEOC) will be activated and will serve as the central site for monitoring an FMD outbreak outside of Iowa's borders but within North America. At this level, the SEOC may be only partially staffed, and many agencies will continue to carry out their responsibilities, as set forth in this plan, at usual work locations. At a minimum, the unified command agencies (IDALS, DPD, DPS, DNR, and DPH) will supply a representative to the SEOC at Action Level 4. If deemed necessary for the purpose of better coordinating inspection activities and/or improving information flow, forward locations staffed by DPS and DOT law enforcement personnel may be established at strategic locations along Iowa's borders.

At Action Level 3, the State Emergency Operations Center (SEOC) will be activated and will serve as the central command site for managing the state and federal response to a presumptive FMD case within Iowa's borders. The Iowa Department of Agriculture and Land Stewardship (IDALS) will dispatch an IDALS field response team when a report of a potential FMD case is received from a private practicing veterinarian, local animal control officer, animal owner/manager, or another person acting as a custodian of susceptible animals. The field response team may include USDA Veterinary staff if available. The field response team will report all field findings to the State Veterinarian. In the case of a presumptive positive diagnosis, the field response team will also immediately notify the Secretary of Agriculture, either directly or through the State Veterinarian, to begin the process of establishing a quarantine area (see "Testing, Quarantines, Cleaning and Disinfection, and Contact Tracing," below, for more information on establishing quarantine areas). If a confirmed case exists elsewhere in North America, and if deemed necessary for the purpose of better coordinating inspection activities and/or improving information flow, forward locations staffed by DPS and DOT law

enforcement personnel may be established at strategic locations along Iowa's borders to prevent the introduction of FMD into Iowa.

At Action Levels 2 and 1, the State Emergency Operations Center (SEOC) will be activated and will serve as the central command site for managing the state and federal response to a confirmed FMD outbreak within Iowa's borders. Forward command locations will be established near FMD-infected sites or groups of infected sites. State operations will be managed using a unified command approach. The unified command at the forward locations will consist of representatives from the Iowa Department's of Agriculture and Land Stewardship, Public Defense, Public Safety, Transportation, and Natural Resources. The unified command at the SEOC will consist of representatives from the above-named forward location agencies plus a representative from the Iowa Department of Public Health. All actions and decisions originating from the SEOC unified command are subject to the oversight and approval of the Governor. The Governor or a designee may elect at any time to establish a presence at the SEOC. Refer to Attachment 5 for a diagram representing the organizational structure at Action Levels 2 and 1.

To reduce the likelihood of losing or distorting information when two or more forward locations have been established, all communication flow will occur between forward locations and the SEOC, and not directly between forward locations. This will ensure that decisionmakers at the SEOC are always as fully aware as possible of conditions in the field, and can therefore direct resources, solve problems, and provide information to others based on this optimal level of awareness.

Surveillance and Detection

The first line of defense in an animal disease emergency such as an FMD outbreak is the early detection and reporting of any actual or suspected problem. Often this responsibility falls on the shoulders of private veterinarians, animal owners, and other custodians of the animals, such as meat inspectors and market operators. It is these individuals who will make the initial call to regulatory agencies.

Any veterinarian, owner, or custodian of an animal exhibiting symptoms of FMD must report this occurrence to the State Veterinarian, and whenever possible, to the USDA Area Veterinarian in Charge (AVIC), as soon as the discovery of these symptoms occurs.

Any person from the general public knowing of, or having reason to suspect, that a dangerous or contagious disease exists among wildlife or domestic animals must report the case(s) to a veterinarian or an animal control officer who, in turn, should immediately report the occurrence to the State Veterinarian and, if possible, to the USDA Area Veterinarian in Charge (AVIC). Members of the public may also contact the State Veterinarian directly.

Early investigations of FMD will likely be conducted on the owner's premises, not in the laboratory. IDALS will immediately dispatch a field response team to

any suspected site(s) and the team will conduct a complete investigation of the situation in a timely manner.

The local veterinary practitioner should be able to furnish the field response team with the following information:

- Name, address and telephone number of owner and/or premises manager;
- Directions to suspect premises;
- Species, breed or type, and number of animals on premises;
- Approximate number of animals affected;
- Nature of the disease reported;
- Date and time when owner/manager first noticed condition;
- Clinical signs detailed;
- Known disease outbreak history;
- Name, address and phone number of the local veterinarian at the scene.
- Any known risk factors such as foreign travel by owner; visits to premise by foreigners; imports of livestock, germplasm (i.e., semen and embryos), or animal products to the premises.
- Animal movements in and out of the premises during the past three weeks.

State and federal veterinarian(s) comprising the IDALS field response team assigned to the case will work with the local veterinary practitioner, livestock owners, and others to conduct animal examination(s) and review all applicable case history information as needed. The IDALS field response team will include a Foreign Animal Disease Diagnostician (FADD). The FADD reports finding to the State Veterinarian, who will ultimately determine if a presumptive diagnosis is warranted.

Testing, Quarantines, Cleaning and Disinfection, and Contact Tracing

If the State Veterinarian pronounces a presumptive FMD diagnosis, the IDALS field response team will immediately notify the Secretary of Agriculture or a designee, who will contact the Office of the Governor, either directly or through the Emergency Management Division, to propose institution of a quarantine whenever people and/or property other than animals or animal products are involved. Upon receiving approval, IDALS staff will quarantine the affected premises and all off-site locations where the animals have been housed until the results of laboratory tests have been returned. Also at this time, the State Veterinarian or a designee will notify the appropriate producer groups about the presumptive diagnosis. If people or property other than animals or animal products are not involved the State Veterinarian may impose a quarantine on the movement of animals and animal products on behalf of the Secretary of Agriculture. Prior approval by the Governor is not necessary in this case.

The State Veterinarian, or designated IDALS staff, in consultation with the AVIC or other designated USDA staff, will establish:

- The extent of the quarantine area and the radius of the surrounding buffer zone;

- Area security and inspection procedures;
- Cleaning and disinfection procedures.

Establishing and enforcing a quarantine area will be accomplished with assistance from other state agencies, if needed, and as coordinated through the Emergency Management Division.

Collection and submission of specimens for testing will be the responsibility of the state and/or federal regulatory field response team personnel with assistance from the local veterinary practitioner. The USDA's AVIC, in consultation with USDA Emergency Program (EP) staff, will issue a priority number and laboratory assignment prior to submission of specimens to the Foreign Animal Disease Diagnostic Laboratory in Plum Island, New York. Currently, only this lab is capable of performing FMD testing. In extremely suspicious cases, diagnostic samples may be delivered by courier directly to the Plum Island laboratory. In the event that local diagnostic laboratories have been in any way involved with preliminary diagnostic work, measures will be taken to eliminate potential laboratory contamination to prevent possible disease spread through this avenue.

When the State Veterinarian receives the test results, these will be immediately shared with the Office of the Governor, either directly or through the Emergency Management Division, and with the appropriate producer groups. If the results are negative, the State Veterinarian will lift the quarantine. In the case of positive results, the quarantine will be maintained for a length of time determined by the State Veterinarian and in accordance with generally accepted veterinary practices and USDA guidelines. The USDA publication entitled Foot-and Mouth Emergency Disease Guidelines (as revised in June 1992 and reprinted in March 2001) will serve as the primary source of guidance when making these decisions.

After notifying the Office of the Governor, either directly or through the Emergency Management Division, the State Veterinarian will designate the sites defined as concentration points and under what circumstances these should be closed to animals and animal products to reduce the chances of spreading FMD.

Strict site bio-security procedures will be followed at all times. For example:

- All vehicles leaving the quarantined premise(s) will be thoroughly cleaned and disinfected with a federally approved disinfectant.
- Only essential personnel will be allowed access to the quarantined site(s). Everyone must remove outer garments and disinfect boots prior to leaving the quarantined premise(s). Disposable coveralls are recommended to facilitate this process.

State and/or federal veterinarians, working with the producer(s), will trace all animals that have been moved to and from the affected premises within a time designated by the State Veterinarian and AVIC. They will do a complete evaluation of the animals' movements, current location(s), and present health status. The presence and proximity of all other animals in the area will be considered. If any animal at a subsequent location is diagnosed positive for

FMD, the protocols for the primary infection site will be followed for the new case premises.

Depopulation

The State Veterinarian identifies which animals will need to be depopulated. The choice of method(s) employed to depopulate infected livestock will be determined by the Iowa Secretary of Agriculture, under the advisement of the State Veterinarian and the AVIC. The Director of the Iowa Department of Natural Resources, under the advisement of the Fish and Wildlife Division, will determine the choice of method(s) employed to depopulate infected wild animal populations. Rapid identification of infected and high-risk animals, and the subsequent speedy euthanasia of these animals, is necessary to bring about the containment and eventual total eradication of FMD in North America.

In Iowa, injection, use of captive-bolt guns, and use of firearms are the most likely options that will be available for euthanizing domesticated animals identified for depopulation. The method or methods ultimately chosen will depend upon the number of livestock affected at an FMD site, the number of FMD sites within the state at the time, the type and quantity of resources and personnel available, and other related factors. Humaneness and the capability to get the job done effectively should be considered the top priorities when deciding which depopulation method(s) to use. Emphasis on one of these two priorities will often offset the degree to which the other can be accomplished.

In the unlikely event that a slaughter plant is located within a quarantine area, carcasses originating from within that zone may be transported to that facility to be euthanized. Slaughter plants in Iowa generally use a combination of electrical stunning and exsanguination (i.e., draining blood) to slaughter livestock. This method is considered to be a relatively effective and humane disposal option.

In addition to the methods described above, other livestock devices and processes have been devised to address a need for large-scale depopulation resulting from an animal disease outbreak. Some of these are in an experimental stage of development and have not been field-tested. Depending on needs and resources, these options may be researched and then duplicated or modified in Iowa.

Carcass Disposal

The choice of methods employed to dispose of euthanized livestock will be determined by the Director of the Iowa Department of Natural Resources, in consultation with the Iowa Secretary of Agriculture, the USDA Area Veterinarian in Charge (AVIC), and the Director of the Iowa Department of Public Health.

Protection of the environment and the capability to get the job done effectively are the primary criteria used to make choices about carcass disposal methods. In Iowa, burial and burning are the most likely methods to be used for disposing of carcasses resulting from an FMD-related depopulation program.

Burial is the preferred method, but if this is not possible due to a high water table or other environmental factors, then burning is the next most likely choice. Burning would be accomplished with an accelerant such as napalm applied to the carcasses to start the fire, plus an underlying pyre of fuel such as wood to keep the fire burning. In the unlikely event that a rendering plant lies within the quarantine area, the transport of carcasses to this facility for disposal would be the most environmentally sound disposal method. Within the range of the plant's throughput capacity, disposal at a rendering plant would also be the most effective method.

Recovery

Recovery will begin immediately upon official notification of a confirmed FMD case in North America. Recovery actions will include a public education campaign about the availability of state and federal assistance programs, public health and safety broadcasts, and a concerted effort among the State of Iowa and Agriculture-based associations to regain/keep consumer confidence in meat and related products.

Federal, State and local agencies operate as a team in the recovery process and will share program information and make their assistance available through the coordinated leadership of the Iowa Department of Agriculture and Land Stewardship and the Iowa Emergency Management Division.

Recovery efforts will be implemented in a manner that does not interfere with any ongoing response activities. To ensure efficient program delivery, agencies will inform potentially impacted individuals and communities as soon as possible about decisions and actions that may affect their lives.

To ensure efficient program delivery to impacted individuals and others, each applicable agency will review, and update as necessary, administrative plans governing the use of any programs that could potentially be made active as part of the process of recovering from an FMD outbreak in Iowa.

IV. PLAN DEVELOPMENT, TESTING, AND MAINTAINANCE

The Iowa Emergency Management Division, assisted by the Iowa Department of Agriculture and Land Stewardship (IDALS), is responsible for the development of this plan. Once it has been expanded to encompass all animal disasters and has been incorporated into the State Emergency Plan, the Iowa Emergency Management Division (EMD) will be responsible for plan updates and other ongoing maintenance. However, IDALS, and the State Veterinarian in particular, will play a central role in ensuring that the plan continues to reflect the latest generally accepted veterinary principles.

Periodic plan testing is essential for determining the ongoing effectiveness of the plan as the legal environment, technology, the livestock industry, the field of veterinary medicine, and other key influences change over time. IDALS will work in partnership with EMD to ensure that adequate testing occurs.

Attachment 1: Glossary

Buffer zone: An area surrounding the quarantine area established for the purpose of separating infected herds from the remainder of the geographic area of the state. The State Veterinarian will determine restrictions on the movement of animals out of the buffer zone. The State Veterinarian will also determine the radius of a buffer zone, with concurrence from the Office of the Governor.

Concentration point: A location or facility where livestock is assembled for purposes of sale or resale for feeding, breeding, or slaughtering, and where contact may occur between groups of swine from various sources. The term "concentration point" includes a public stockyard, auction market, street market, state or federal market, untested consignment sales location, buying station, or a livestock dealer's yard, truck, or facility.

Confirmed positive FMD diagnosis: The State Veterinarian's determination that an animal has contracted FMD, which is based on a laboratory test, clinical symptoms, and, when available, the judgement of the USDA Area Veterinarian In Charge. Currently the only laboratory capable of performing these tests in the US is located in Plum Island, New York.

Euthanasia: The humane destruction of an animal accomplished by a method that involves instantaneous unconsciousness and immediate death or by a method that involves anesthesia, produced by an agent which causes painless loss of consciousness, and death during the loss of consciousness.

Foot-and-mouth disease: A highly contagious and economically devastating disease of cattle, swine, sheep, goats, deer, and other cloven-hoofed ruminants.

Foreign Animal Disease Diagnostician: A veterinarian who has received specialized training qualifying her or him to diagnose specific animal diseases using field analysis, laboratory test results, or a combination of the two.

Governor's Proclamation of Disaster Emergency: Activates the disaster response and recovery aspect of the state, local and interjurisdictional disaster emergency plans applicable to the political subdivision or area in question and provides authority for the deployment and use of any forces to which the plan applies, and for use or distribution of any supplies, equipment, and materials and facilities assembled, stockpiled, or arranged to be made available.

Presumptive positive FMD diagnosis: The State Veterinarian's determination that an animal has contracted FMD, based on a field analysis by a Foreign Animal Disease Diagnostician (FADD) and/or preliminary laboratory results, and, when available, the judgement of the USDA Area Veterinarian In Charge.

Quarantine area: The area extending immediately around herds presumed or confirmed to be infected with FMD. The State Veterinarian determines the radius of this area under the advisement of the USDA Area Veterinarian In Charge, with concurrence from the Office of the Governor. Within a quarantine area, movement restrictions and cleaning and disinfection requirements are in effect.

Regional Emergency Animal Disease Eradication Organization (READEO): READEO is made up of pre-trained animal health specialists comprising two pre-designated and regionally organized task forces. These groups stand ready to assemble for the purpose of eradicating a major animal disease outbreak.

Attachment 2: Acronym List

AHERT	Animal Health Emergency Response Team
APHIS	Animal and Plant Health Inspection Service (USDA)
AVIC	Area Veterinarian In Charge (USDA)
DNR	(Iowa) Department of Natural Resources
DOT	(Iowa) Department of Transportation
DPH	(Iowa) Department of Public Health
DPS	(Iowa) Department of Public Safety
EAS	Emergency Alert System
EMD	(Iowa) Emergency Management Division
EP	Emergency Programs (USDA/APHIS)
FAA	Federal Aviation Administration
FADD	Foreign Animal Disease Diagnostician
FEMA	Federal Emergency Management Agency
FMD	Foot-and Mouth Disease
FSA	Farm Service Agency (FSA)
FSIS	Food Safety Inspection Service (USDA)
IAWAS	Iowa WARNING System
IDALS	Iowa Department of Agriculture and Land Stewardship
ISU	Iowa State University
IVMA	Iowa Veterinary Medical Association
LPA	Legislative and Public Affairs (USDA/APHIS)
NAWAS	NATIONAL WARNING System
NOAA	National Oceanographic and Atmospheric Administration
PPQ	Plant Protection and Quarantine (USDA/APHIS)
READEO	Regional Emergency Animal Disease Eradication Organization
SEOC	State Emergency Operations Center
USDA	United States Department of Agriculture
VS	Veterinary Services (USDA/APHIS)

Attachment 3: Sample Governor's Proclamation of Disaster Emergency

WHEREAS, ON {DAY, DATE}, FOOT AND MOUTH DISEASE WAS CONFIRMED IN THE UNITED STATES {CANADA OR MEXICO}; AND

WHEREAS, FOOT AND MOUTH DISEASE IS A HIGHLY CONTAGIOUS, ECONOMICALLY DEVASTATING DISEASE THAT IMPACTS, CATTLE, SWINE, SHEEP, GOATS AND DEER; AND

WHEREAS, TO PREVENT THE INTRODUCTION OF THIS DISEASE OR TO RESPOND TO AND RECOVER FROM THE INTRODUCTION OF THIS DISEASE IN THE STATE OF IOWA; AND

WHEREAS, SURVEYS AND REPORTS FORWARDED BY LOCAL AND STATE OFFICIALS INDICATE THAT STATE ASSISTANCE WILL BE NEEDED TO RESPOND TO AND RECOVER FROM THE EFFECTS OF THIS DISEASE:

NOW, THEREFORE, I, THOMAS J. VILSACK, GOVERNOR OF THE STATE OF IOWA, DO HEREBY PROCLAIM A STATE OF DISASTER EMERGENCY FOR ALL COUNTIES IN THE STATE OF IOWA FOR THE AFOREMENTIONED REASONS. THIS PROCLAMATION OF DISASTER EMERGENCY AUTHORIZES LOCAL AND STATE GOVERNMENT TO RENDER GOODS AND SUFFICIENT AID TO ASSIST THESE AREAS IN THEIR TIME OF NEED.

IN TESTIMONY WHEREOF, I HAVE HEREUNTO SUBSCRIBED MY NAME AND THE GREAT SEAL OF THE STATE OF IOWA TO BE AFFIXED. DONE AT DES MOINES THIS {NUMBER} DAY OF {MONTH} IN THE YEAR OF OUR LORD TWO THOUSAND {ONE}.

THOMAS J. VILSACK
GOVERNOR

ATTEST:

CHESTER J. CULVER
SECRETARY OF STATE

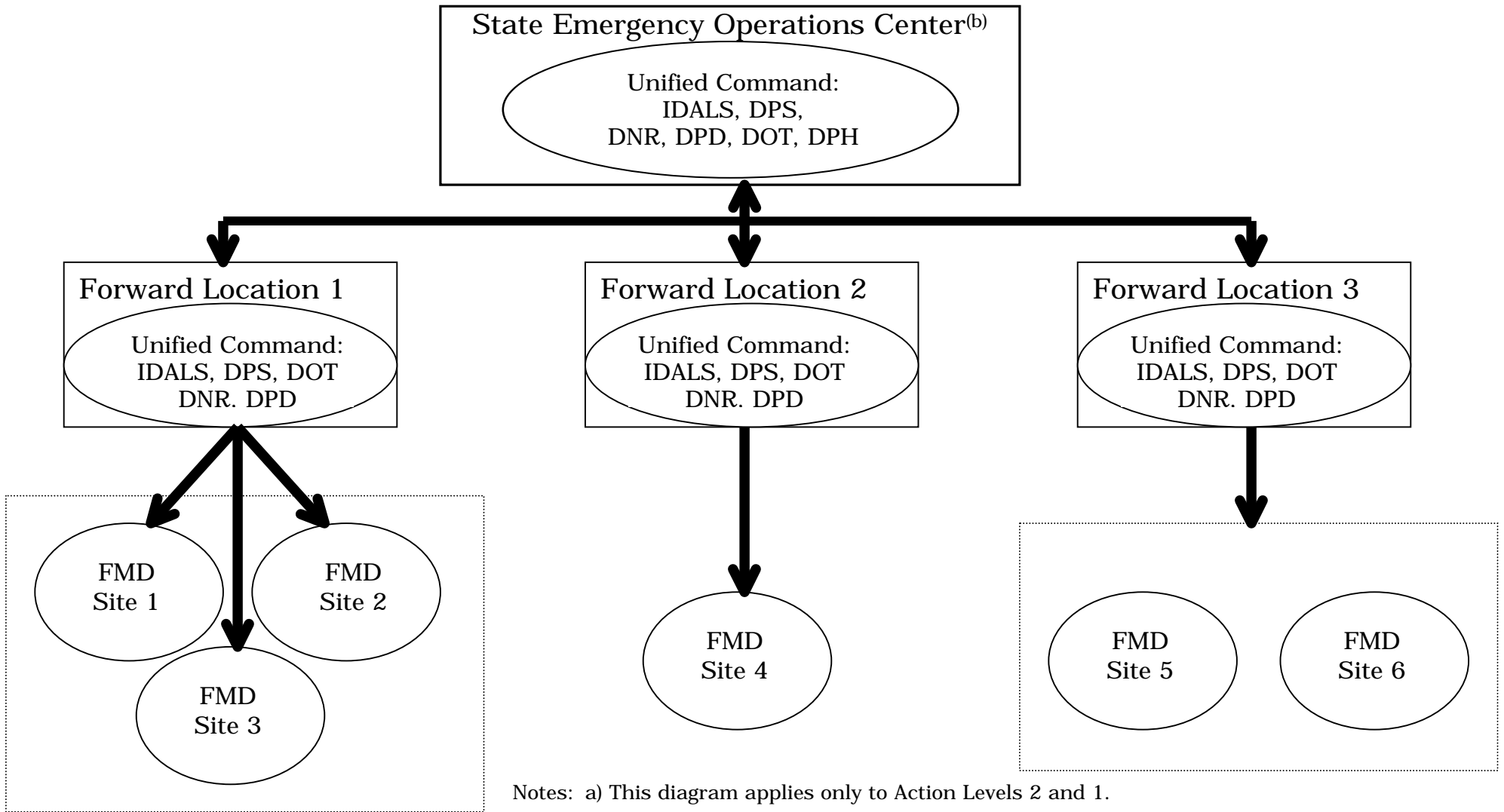
Attachment 4: Animal Health Emergency Response Team

The Animal Health Emergency Response Team (AHERT) concept developed out of a Foreign Animal Disease Exercise conducted at the State Emergency Operations Center (SEOC) in Johnston on October 17, 1997. The team is composed of representatives of those state agencies and other organizations that would play a key part in a response to a major foreign or emerging animal disease outbreak or other animal health emergency. Should the need arise, team members will be contacted by the State Veterinarian and/or the USDA/APHIS/VS Area Veterinarian In Charge. If it becomes necessary to bring the team together, the most likely assembly point will be the SEOC.

In addition to the state agencies specified in the body of this plan, the Animal Health Emergency Response Team contains members from the following organizations:

AMERICAN ASSOCIATION OF SWINE VETERINARIANS
FARM SERVICE AGENCY (A USDA AGENCY)
FOOD SAFETY INSPECTION SERVICE (A USDA AGENCY)
IOWA CATTLEMEN'S ASSOCIATION
IOWA DAIRY FOODS ASSOCIATION
IOWA DAIRY PRODUCTS ASSOCIATION
IOWA FARM BROADCASTERS ASSOCIATION
IOWA FARM BUREAU FEDERATION
IOWA PORK PRODUCERS' ASSOCIATION
IOWA SHEEP INDUSTRY ASSOCIATION
IOWA STATE DAIRY ASSOCIATION
IOWA VETERINARY MEDICAL ASSOCIATION
MIDWEST DAIRY ASSOCIATION
USDA/APHIS/PPQ RAPID RESPONSE TEAM
USDA/APHIS/VS AREA VETERINARIAN IN CHARGE

Attachment 5: Concept of Statewide Organization for Response to a Foot-and-Mouth Outbreak^(a)



Notes: a) This diagram applies only to Action Levels 2 and 1.
b) The Governor or a designee may elect to establish a presence at the SEOC.

Attachment 6: Major Susceptible Animal Producer Groups and Primary Non-governmental Stakeholders/Response Entities

Iowa Pork Producers Association

Mailing Address:

PO Box 71009

Clive, IA 50325

Shipping Address:

1636 N.W. 114th Street

Clive, IA 50325

<http://www.iowapork.org>

Iowa Elk Breeders Association

2727 Adair-Union St.

Creston, IA 50801-7514

<http://www.wapiti.net/ieba/default.cfm>

Iowa Cattlemen's Association

P.O. Box 1490

2055 Ironwood Court

Ames, IA 50014

<http://www.iacattlemen.org/>

Livestock Marketing Association

7509 Tiffany Springs Parkway

Kansas City, MO 64153

<http://www.lmaweb.com/>

Iowa Veterinary Medical Association (IVMA)

5921 Fleur Drive

Des Moines, IA 50321

<http://www.iowavma.org/>

Iowa Dairy Products Association

8525 Douglas Ave., Suite 37

Urbandale, IA 50322

American Red Cross

2116 Grand Avenue, #1

Des Moines, IA 50312

www.iowa.org/redcross

Iowa Dairy Foods Association

321 East Walnut St., Suite 200

Des Moines, IA 50309-2026

Iowa Farm Bureau Federation

5400 University Avenue

West Des Moines, IA 50266

<http://www.ifbf.org/>

Midwest Dairy Association

101 NE Trilein Drive

Ankeny, IA 50021-2011

Iowa Farm Broadcasters Association

c/o WHO Radio

1801 Grand Ave.

Des Moines, IA 50309

Iowa State Dairy Association

2029 275th Street

Manchester, IA 52057

Iowa Sheep Industry Association

27453 110th Street

Ackley, Iowa 50601-7711

iasheep@cnsinternet.com

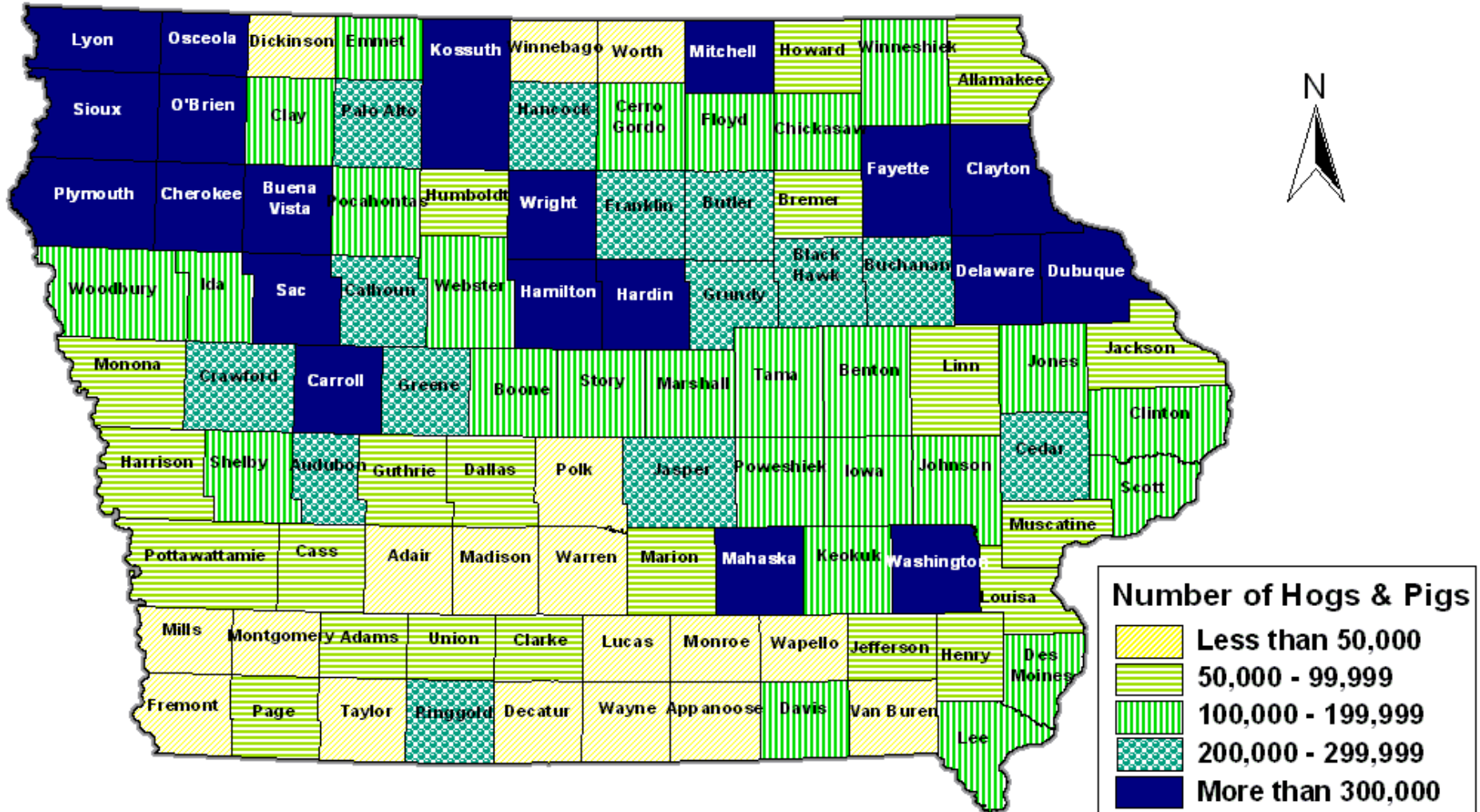
Attachment 7: Situation Maps

- Map 1 – Hog and pig concentration by county.....41
- Map 2 – Cattle and calf concentration by county.....42
- Map 3 – Milk cow concentration by county.....43
- Map 4 – Sheep and lamb concentration by county44
- Map 5 – Deer concentration by county45
- Map 6 – Locations of Iowa packing plants, rendering plants, and livestock markets.....46

DRAFT DRAFT DRAFT DRAFT DRAFT

Hogs and Pigs

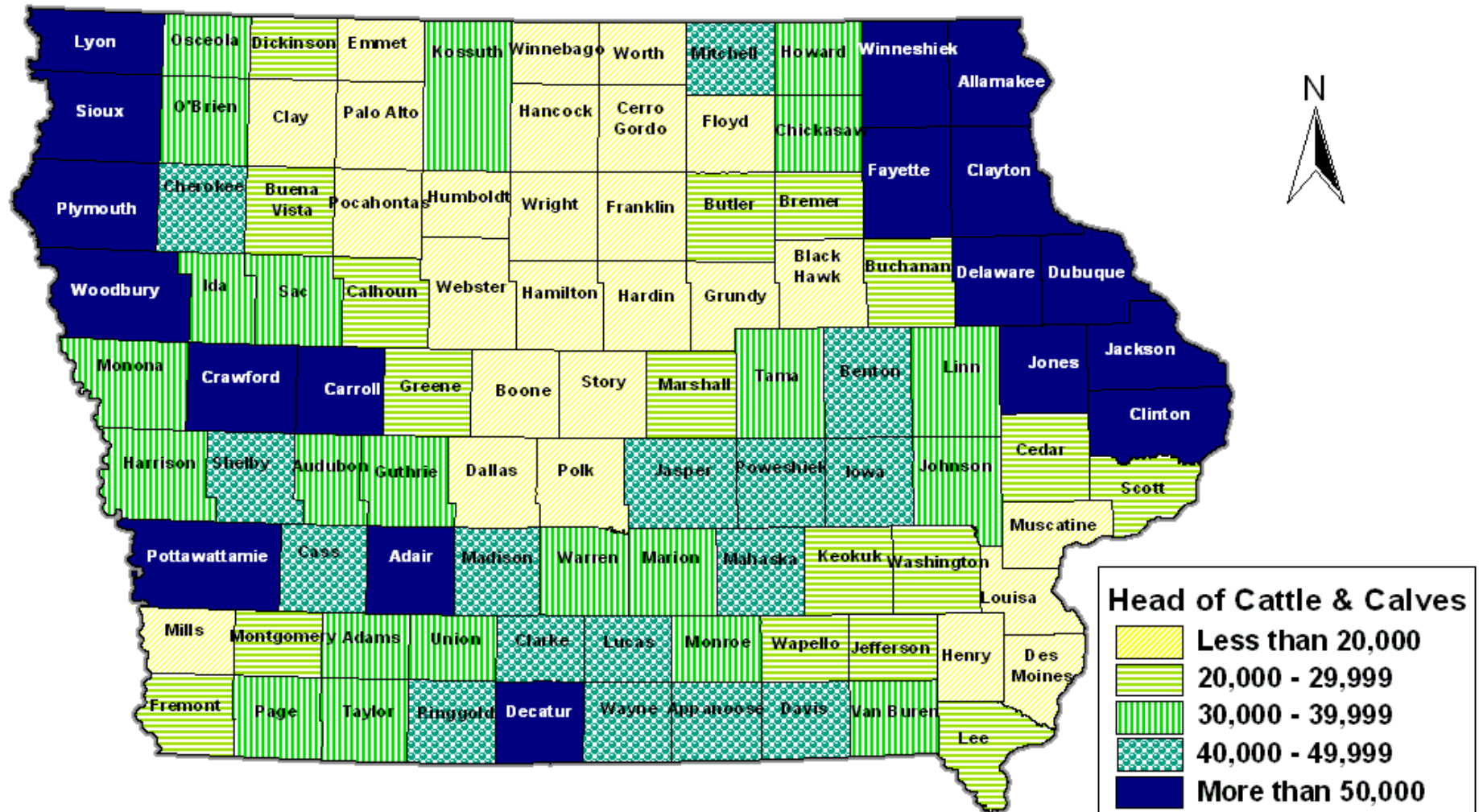
Source: USDA Census of Agriculture, 1997



DRAFT DRAFT DRAFT DRAFT DRAFT

Cattle and Calves

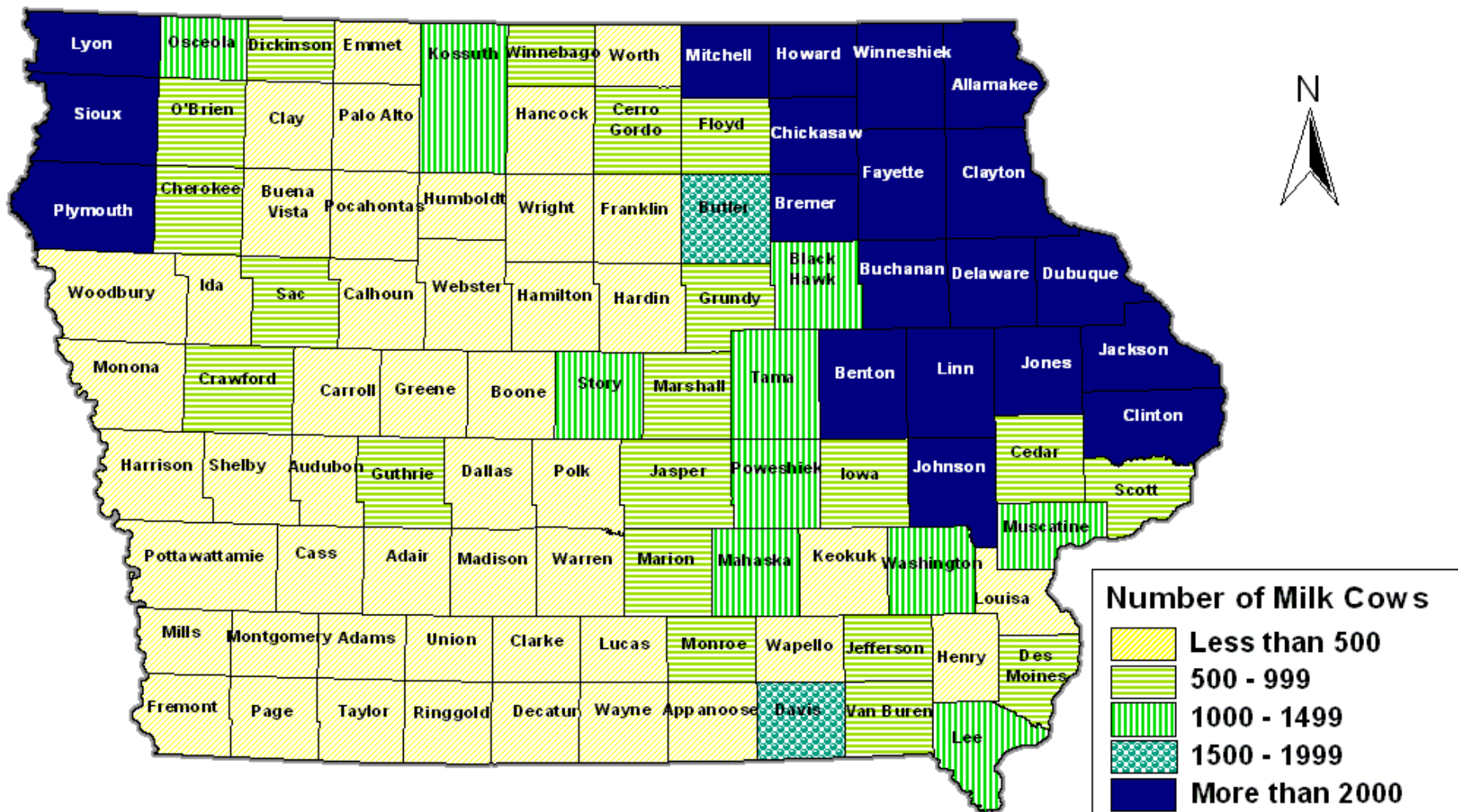
Source: USDA Census of Agriculture, 1997



DRAFT DRAFT DRAFT DRAFT DRAFT

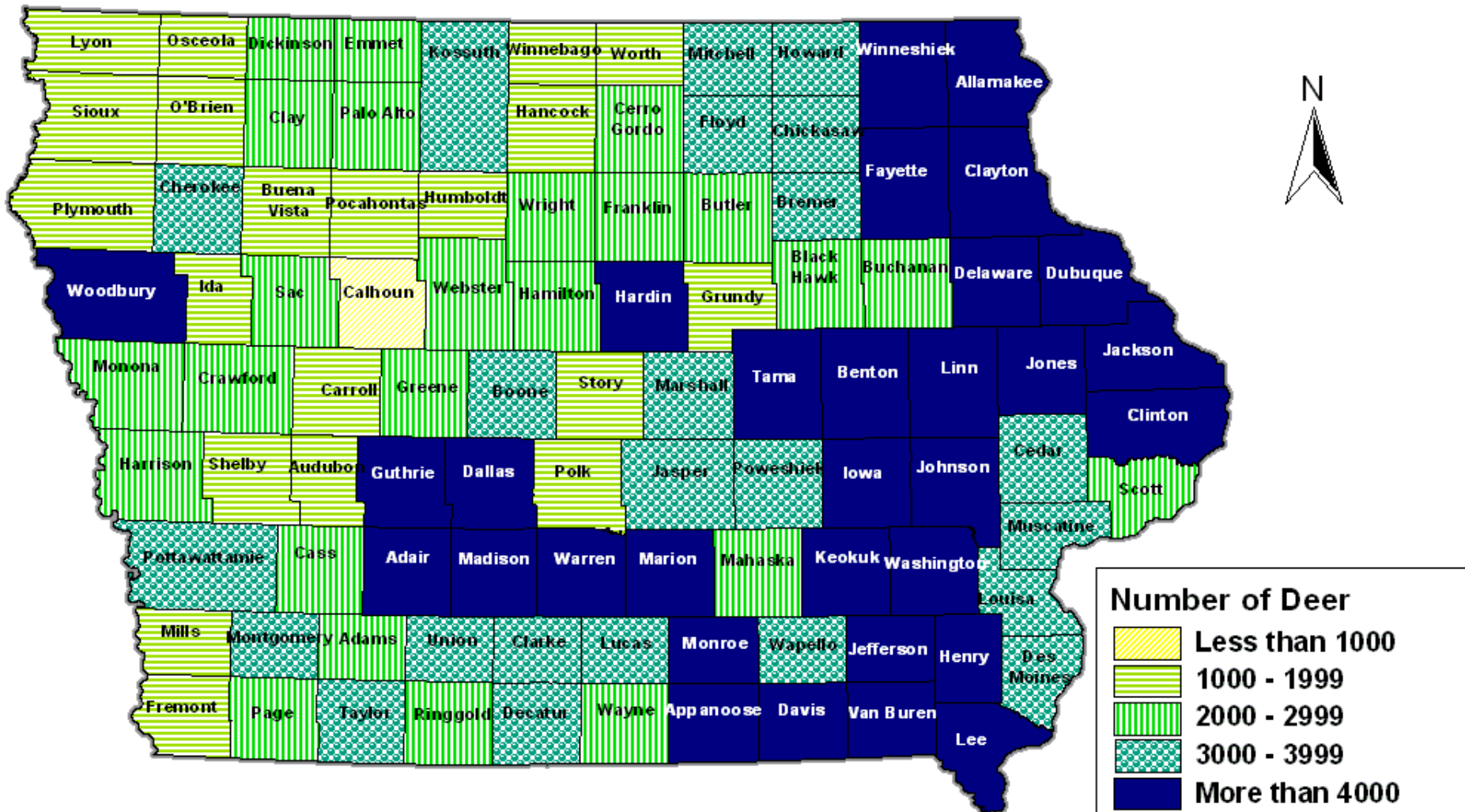
Milk Cows

Source: USDA Census of Agriculture, 1997



Deer

Source: USDA Census of Agriculture, 1997



DRAFT DRAFT DRAFT DRAFT DRAFT

Packing Plants, Rendering Plants and Livestock Markets

Sources: Iowa Department of Agriculture and Land Stewardship,
Iowa Pork Producers Association and National By-Products, Inc.

